

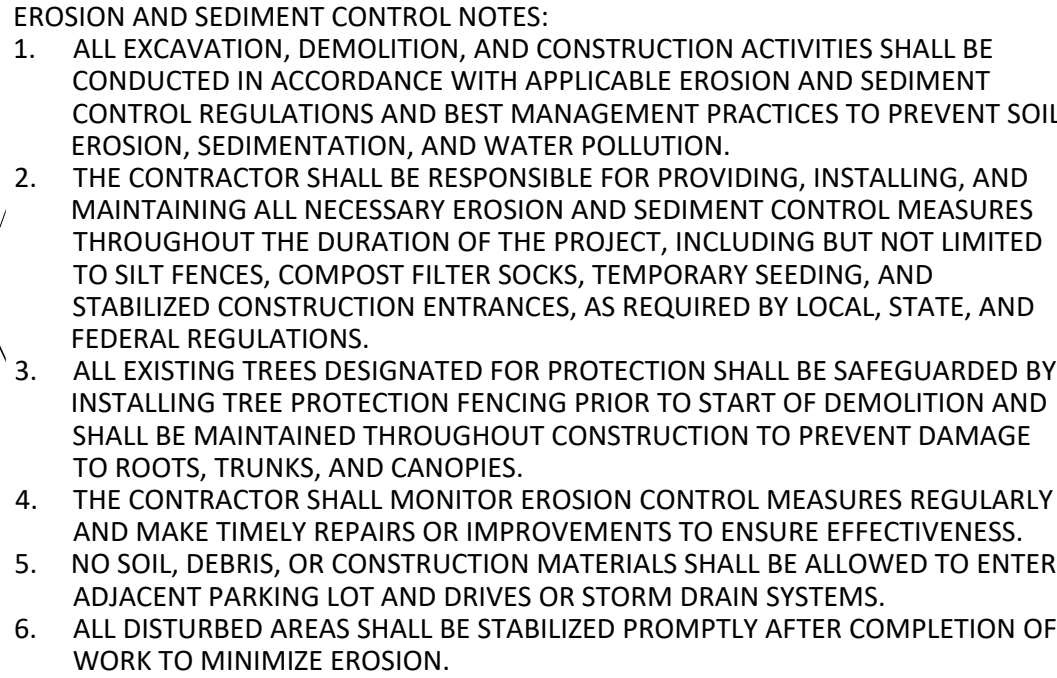
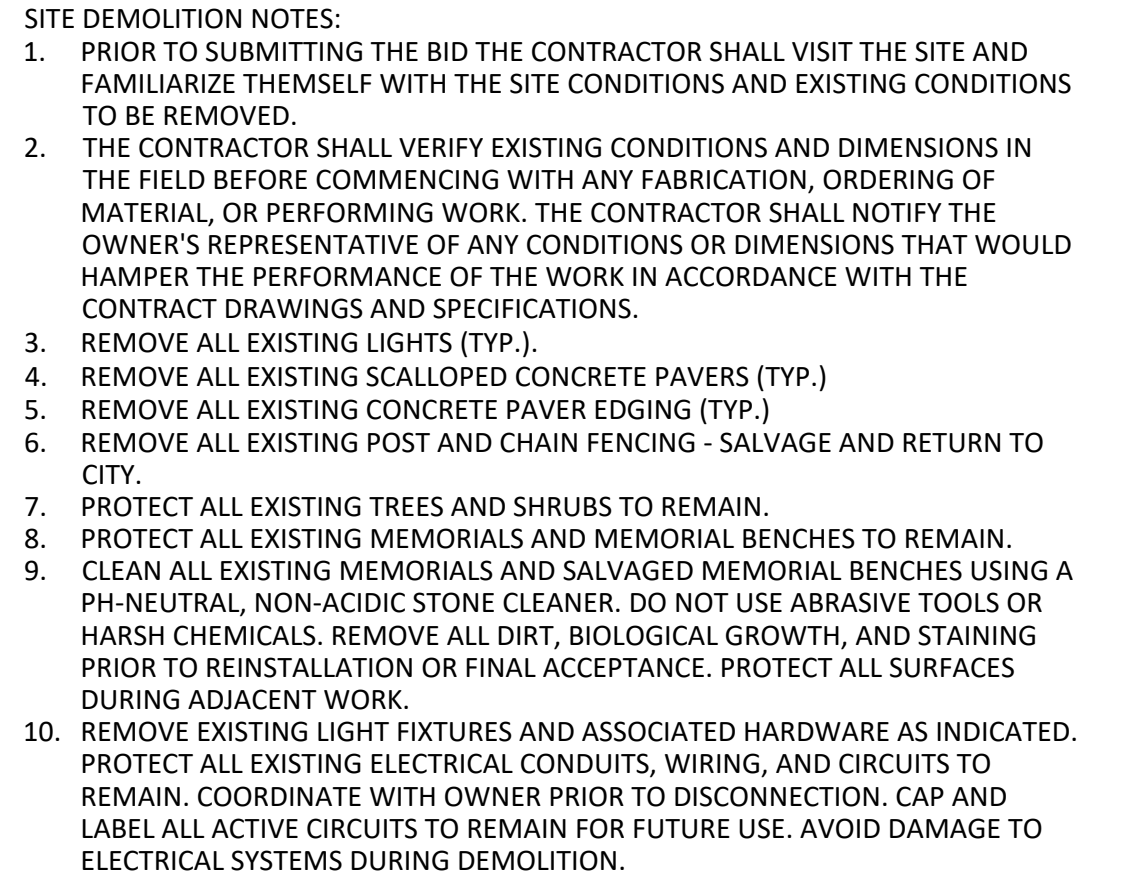
REVISIONS	

CITY OF PLATTSBURGH
VETERANS MEMORIAL PARK PROJECT
**MEMORIAL PARK - USS
SITE DEMOLITION PLAN**

B&L
10 Airline Drive
Suite 200
Albany, NY
12205

Barton & Loguidice, D.P.C.

Date	AUGUST 2025
Scale	1" = 10'-0"
Sheet Number	X100
Project Number	853.027.001



SITE LAYOUT AND MATERIALS LEGEND

- EXISTING SIGN TO REMAIN IN PLACE
- EXISTING ELECTRIC TO REMAIN IN PLACE
- NEW WELL LIGHT LF2 FLUSH TO THE CONCRETE WALK AND ANGLED APPROPRIATELY TO THE MEMORIALS
- NEW WELL LIGHT LF3 FLUSH TO THE GROUND AND ANGLED APPROPRIATELY TO THE MEMORIALS
- NEW SPOTLIGHT POINTED AT LARGE FLAGPOLE
- EXISTING FLAGPOLE TO REMAIN IN PLACE
- EXISTING TRASH CAN TO REMAIN
- EXISTING METAL ARCHING SIGN TO REMAIN IN PLACE
- NEW SPIGOT AND WATERLINE
- EXISTING MEMORIAL BENCH TO REMAIN IN PLACE
- EXISTING GRANITE MEMORIAL BENCH TO BE REMOVED AND SALVAGED FOR RESET ON NEW PAVEMENT
- EXISTING MEMORIAL TO REMAIN IN PLACE
- EXISTING FENCE TO BE RESET ON NEW PAVEMENT
- EXISTING DECIDUOUS SHRUB TO REMAIN
- EXISTING TREE TO REMAIN
- NEW SHADE TREE
- NEW FLOWERING TREE
- NEW PLANTING BED
- EXISTING MEMORIAL WALL TO REMAIN - PROTECT IN PLACE
- EXISTING MEMORIAL WALL TO REMAIN - REPLACE GRANITE CAP WITH CONCRETE TO MATCH SOUTHERN WALLS
- EXISTING STAMPED CONCRETE PAVEMENT TO REMAIN
- NEW CONCRETE PAVEMENT
- NEW AGGREGATE CONCRETE PAVEMENT
- EXISTING MEMORIAL TO REMAIN

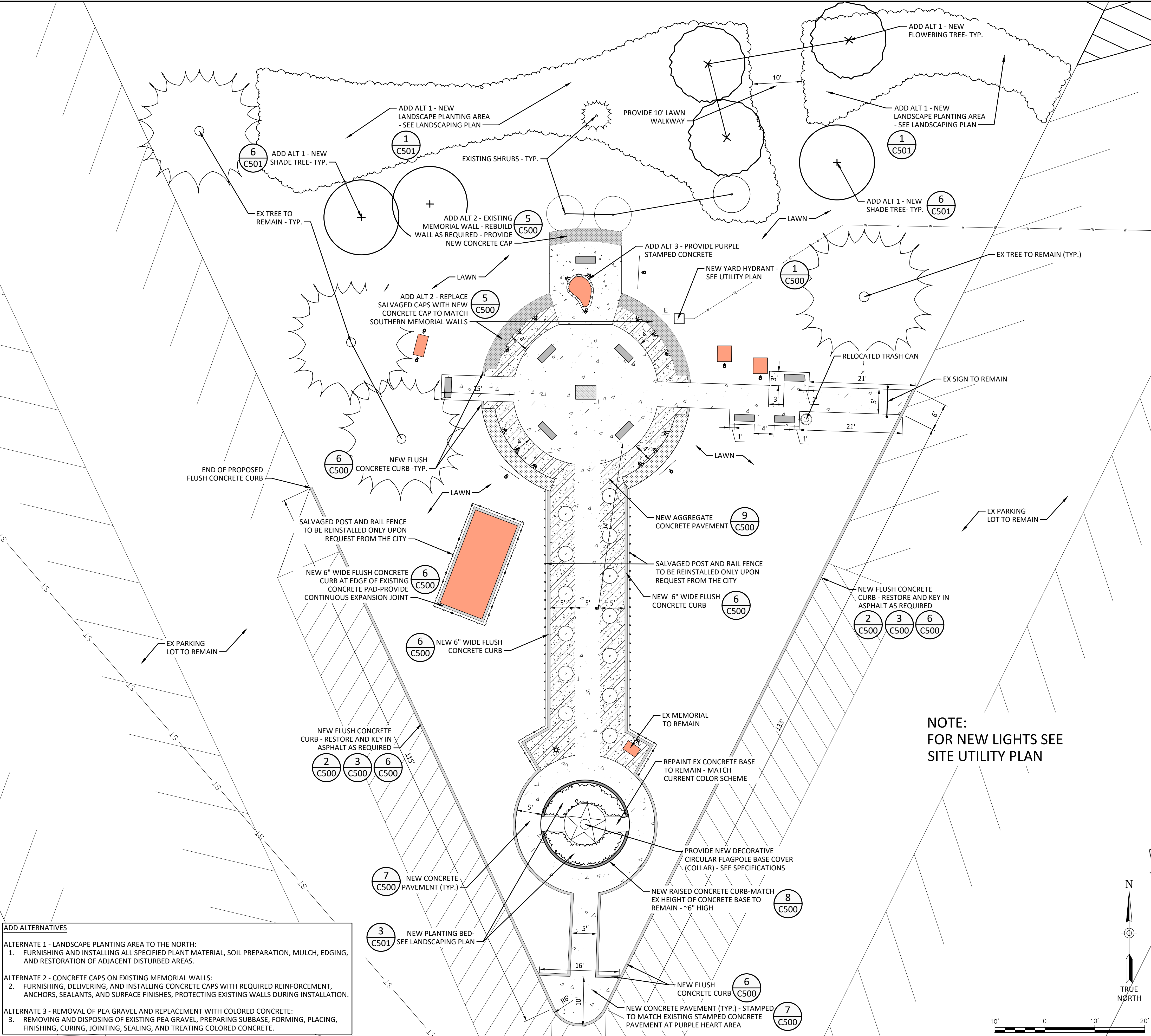
GRADING AND DRAINAGE NOTES

1. NO MAJOR GRADING OPERATIONS ARE REQUIRED. EXISTING FINISHED GRADES SHALL BE MAINTAINED UNLESS NOTED OTHERWISE ON THE PLANS.
2. ALL PAVEMENT REPLACEMENTS SHALL BE INSTALLED TO MATCH EXISTING ADJACENT FINISH GRADES AND SLOPES TO ENSURE POSITIVE SURFACE DRAINAGE AWAY FROM STRUCTURES.
3. PROVIDE A MINIMUM SLOPE OF 1.5% ON ALL PAVEMENT SURFACES TO PREVENT PONDING AND PROMOTE SURFACE RUNOFF TOWARD LAWN AREAS.
4. ENSURE THAT WATER DISCHARGE FROM THE SITE DOES NOT CREATE EROSION OR DAMAGE TO ADJACENT PROPERTIES OR FACILITIES.
5. SUBGRADE AND BASE MATERIALS UNDER PAVEMENTS SHALL BE PREPARED TO PROMOTE PROPER DRAINAGE AND PREVENT WATER ACCUMULATION UNDER THE SURFACES.
6. ANY AREAS WHERE SURFACE RUNOFF MAY POND SHALL BE RE-GRADED AS NECESSARY TO PROVIDE POSITIVE DRAINAGE.

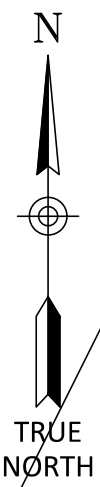


ADD ALTERNATIVES

- ALTERNATE 1 - LANDSCAPE PLANTING AREA TO THE NORTH:
1. FURNISHING AND INSTALLING ALL SPECIFIED PLANT MATERIAL, SOIL PREPARATION, MULCH, EDGING, AND RESTORATION OF ADJACENT DISTURBED AREAS.
- ALTERNATE 2 - CONCRETE CAPS ON EXISTING MEMORIAL WALLS:
2. FURNISHING, DELIVERING, AND INSTALLING CONCRETE CAPS WITH REQUIRED REINFORCEMENT, ANCHORS, SEALANTS, AND SURFACE FINISHES, PROTECTING EXISTING WALLS DURING INSTALLATION.
- ALTERNATE 3 - REMOVAL OF PEA GRAVEL AND REPLACEMENT WITH COLORED CONCRETE:
3. REMOVING AND DISPOSING OF EXISTING PEA GRAVEL, PREPARING SUBBASE, FORMING, PLACING, FINISHING, CURING, JOINTING, SEALING, AND TREATING COLORED CONCRETE.



NOTE:
FOR NEW LIGHTS SEE
SITE UTILITY PLAN



IT IS A VIOLATION OF THE NEW YORK STATE EDUCATION LAW, ARTICLE 145 §7209 SPECIAL PROVISIONS, FOR ANY PERSON, UNLESS THEY ARE ACTING UNDER THE DIRECTION OF A LICENSED PROFESSIONAL ENGINEER, ARCHITECT, LANDSCAPE ARCHITECT, OR LAND SURVEYOR, TO ALTER AN ITEM IN ANY WAY. IF AN ITEM BEARING THE STAMP OF A LICENSED PROFESSIONAL IS ALTERED, THE ALTERING PROFESSIONAL SHALL STAMP THE DOCUMENT AND INCLUDE THE NOTATION "ALTERED BY" FOLLOWED BY THEIR SIGNATURE, THE DATE OF SUCH ALTERATION, AND A SPECIFIC DESCRIPTION OF THE ALTERATION.

REVISIONS	

CITY OF PLATTSBURGH
VETERANS MEMORIAL PARK PROJECT
VETERANS MEMORIAL PARK - US OVAL PARK
SITE LAYOUT AND MATERIALS PLAN
CLINTON COUNTY, NEW YORK
CITY OF PLATTSBURGH

B&L
10 Airline Drive
Suite 200
Albany, NY
12205
Barton & Loguidice, D.P.C.



Date
AUGUST 2025
Scale
1" = 10'-0"
Sheet Number
C100
Project Number
853.027.001

SITE UTILITIES LEGEND

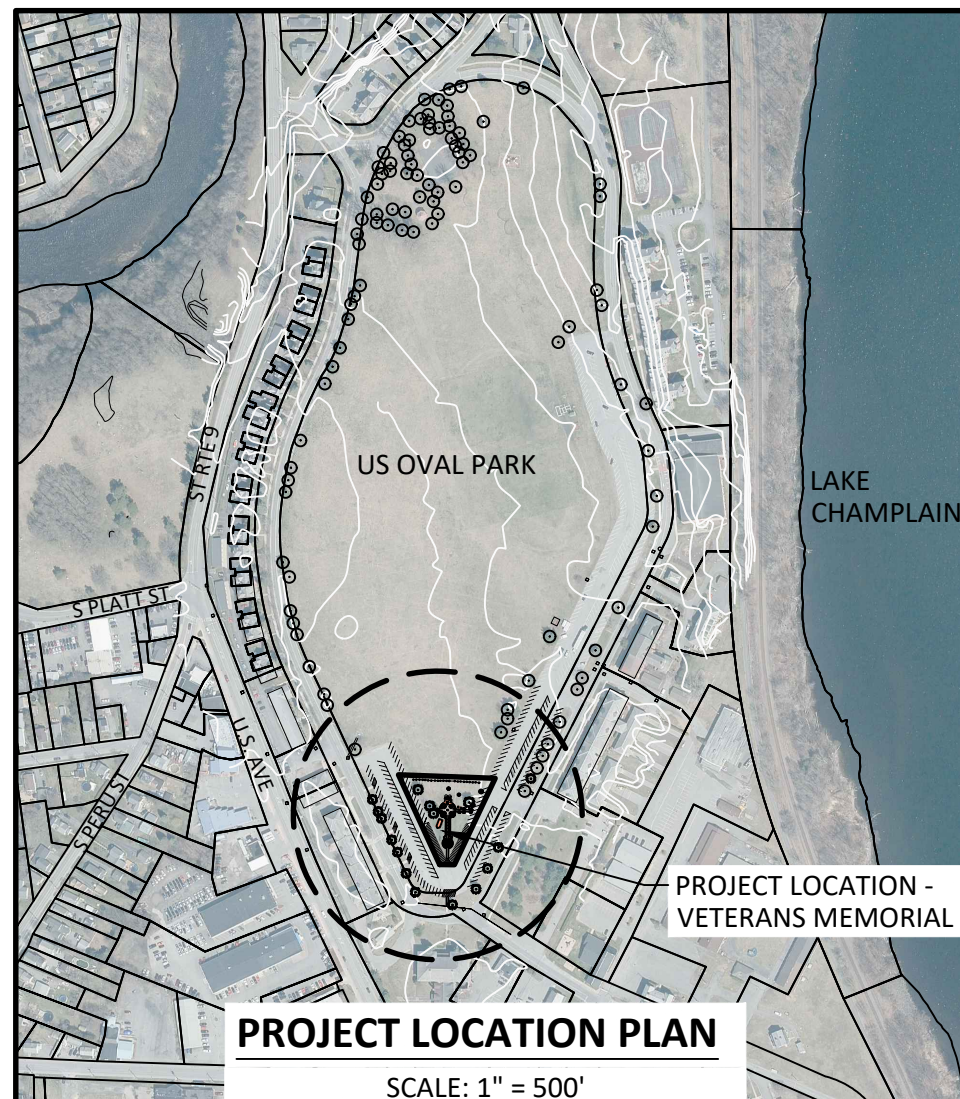


WATER SERVICE NOTES:

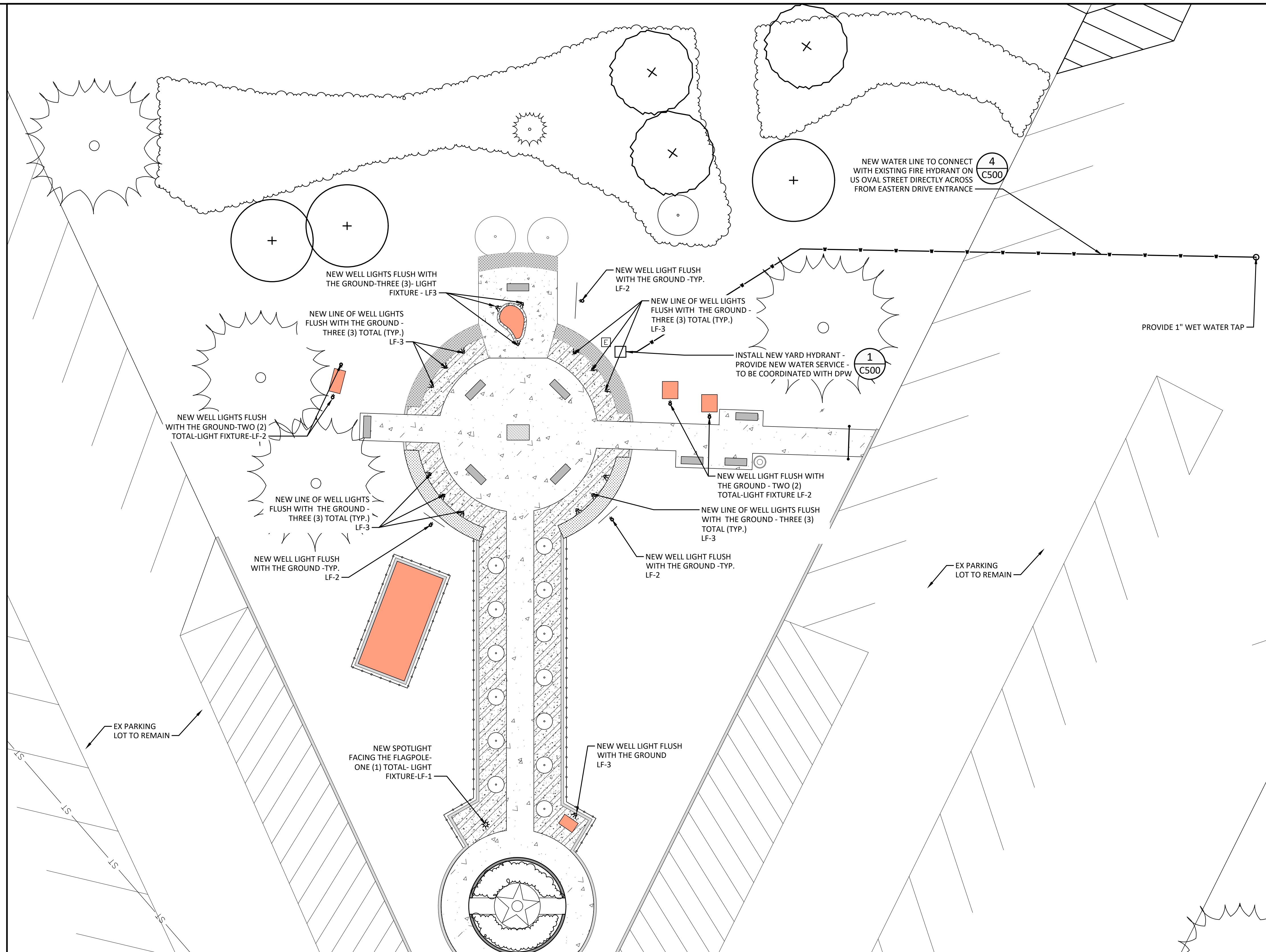
1. THE CONTRACTOR SHALL EXTEND THE EXISTING WATER SOURCE NEAR US OVAL PARK TO VETERANS PARK TO PROVIDE AN AVAILABLE YARD HYDRANT.
2. CONTRACTOR SHALL FIELD-VERIFY THE LOCATION, DEPTH, AND CONDITION OF THE EXISTING FIRE HYDRANT WATER MAIN AND CONNECTION POINT PER CITY OF PLATTSBURGH WATER DEPARTMENT REQUIREMENTS.
3. INSTALL A 1" TYPE K COPPER SERVICE LINE WITH CURB STOP AND VALVE BOX NEAR TAP LOCATION.
4. ROUTE SERVICE TO A FROST-PROOF YARD HYDRANT (A.Y. McDONALD, WOODFORD, OR APPROVED EQUAL) INSTALLED ON A CONCRETE BASE PAD.
5. LOCATE AND ORIENT THE YARD HYDRANT AS DIRECTED BY THE OWNER.
6. FLUSH, TEST, AND DISINFECT NEW WATER SERVICE PER AWWA STANDARDS.
7. COORDINATE ALL WORK WITH THE CITY WATER DEPARTMENT.
8. INCLUDE FINAL LOCATION OF CURB STOP AND YARD HYDRANT ON AS-BUILT DRAWINGS.

ELECTRICAL NOTES:

9. CONTRACTOR SHALL COORDINATE WITH OWNER TO IDENTIFY ALL EXISTING ELECTRICAL CIRCUITS, CONDUITS, AND DEVICES WITHIN THE PROJECT LIMITS PRIOR TO START OF WORK.
10. PROTECT ALL ACTIVE ELECTRICAL CONDUITS AND CIRCUITS DURING CONSTRUCTION. DO NOT CUT OR DISTURB ANY ELECTRICAL LINES WITHOUT OWNER APPROVAL.
11. DISCONNECT AND REMOVE LIGHT FIXTURES AS INDICATED. ALL REMOVALS SHALL BE DONE IN A MANNER THAT MAINTAINS CONTINUITY OF ACTIVE CIRCUITS UNLESS OTHERWISE DIRECTED.
12. EXISTING ELECTRICAL CONDUITS TO REMAIN SHALL BE CAPPED, TERMINATED, OR EXTENDED AS REQUIRED TO ACCOMMODATE NEW WORK. COORDINATE FINAL CONDITIONS WITH OWNER.
13. CONTRACTOR SHALL INSTALL, WIRE, AND CONNECT ALL NEW LIGHT FIXTURES IN ACCORDANCE WITH THE DRAWINGS AND SPECIFICATIONS. VERIFY ALL LIGHTS ARE FULLY OPERATIONAL PRIOR TO FINAL ACCEPTANCE.
14. ANY ELECTRICAL WORK, INCLUDING EXTENSIONS, TERMINATIONS, OR CONNECTIONS, SHALL BE PERFORMED BY A LICENSED ELECTRICIAN IN ACCORDANCE WITH APPLICABLE CODES AND STANDARDS.
15. CONTRACTOR SHALL NOTIFY OWNER IMMEDIATELY IF DAMAGED OR UNEXPECTED ELECTRICAL INFRASTRUCTURE IS ENCOUNTERED.



SCALE: 1" = 500'



LIGHT FIXTURE SCHEDULE						
QTY.	DESCRIPTION	FIXTURE	MFG	PRODUCT	CATALOG NO.	DESCRIPTION
1	SPOT LIGHT	LF1	DABMAR	LED DIRECTIONAL SPOT LIGHT	DPR50-LED 28 LED DIRECTIONAL SPOT LIGHT	120V 28W LED LANDSCAPE SECURITY / DIRECTIONAL SPOT AND FLOOD LIGHT - DPR50-LED28
7	WELL LIGHT - LAWN	LF2	DABMAR	ADJUSTABLE IN-GROUND WELL LIGHT	FG316 ADJUSTABLE IN-GROUND WELL LIGHT	12V LED ADJUSTABLE IN GROUND FIBERGLASS WELL LIGHT - LED PAR36 BULBS - FG316
16	WELL LIGHT - PAVEMENT	LF3	DABMAR	RADEAN POST TOP	LV312 ADJUSTABLE IN-GROUND WELL LIGHT	12V COMPOSITE ADJUSTABLE IN GROUND WELL LIGHT WITH STAINLESS STEEL COVER - PAR36-LED LIGHT - LV312

IT IS A VIOLATION OF THE NEW YORK STATE EDUCATION LAW, ARTICLE 145 §2709(a) SPECIAL PROVISIONS, FOR ANY PERSON, UNLESS THEY ARE ACTING UNDER THE DIRECTION OF A LICENSED PROFESSIONAL ENGINEER, ARCHITECT, LANDSCAPE ARCHITECT, OR LAND SURVEYOR, TO ALTER AN ITEM IN ANY WAY. IF AN ITEM BEARING THE STAMP OF A LICENSED PROFESSIONAL IS ALTERED, THE ALTERING PROFESSIONAL SHALL STAMP THE DOCUMENT AND INCLUDE THE NOTATION "ALTERED BY" FOLLOWED BY THEIR SIGNATURE, THE DATE OF SUCH ALTERATION, AND A SPECIFIC DESCRIPTION OF THE ALTERATION.

VETERANS MEMORIAL PARK - US OVAL PARK SITE UTILITY PLAN

CITY OF PLATTSBURGH
VETERANS MEMORIAL PARK PROJECT

CITY OF PLATTSBURGH

CLINTON COUNTY, NEW YORK

10 Airline Drive
Suite 200
Albany, NY
12205

Barton & Loguidice, D.P.C.

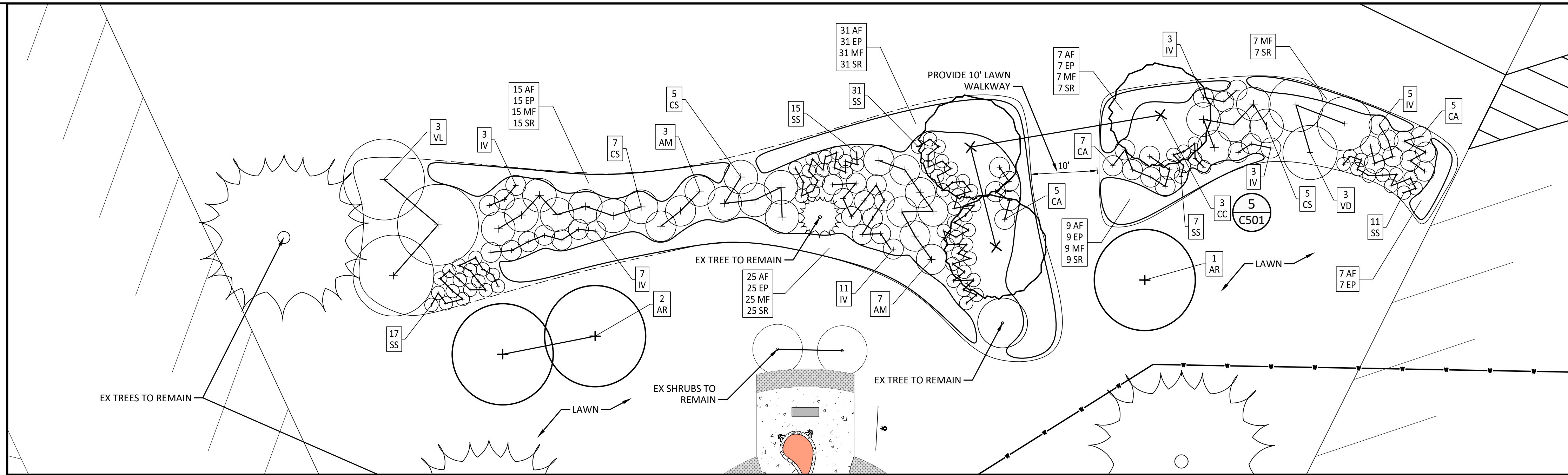
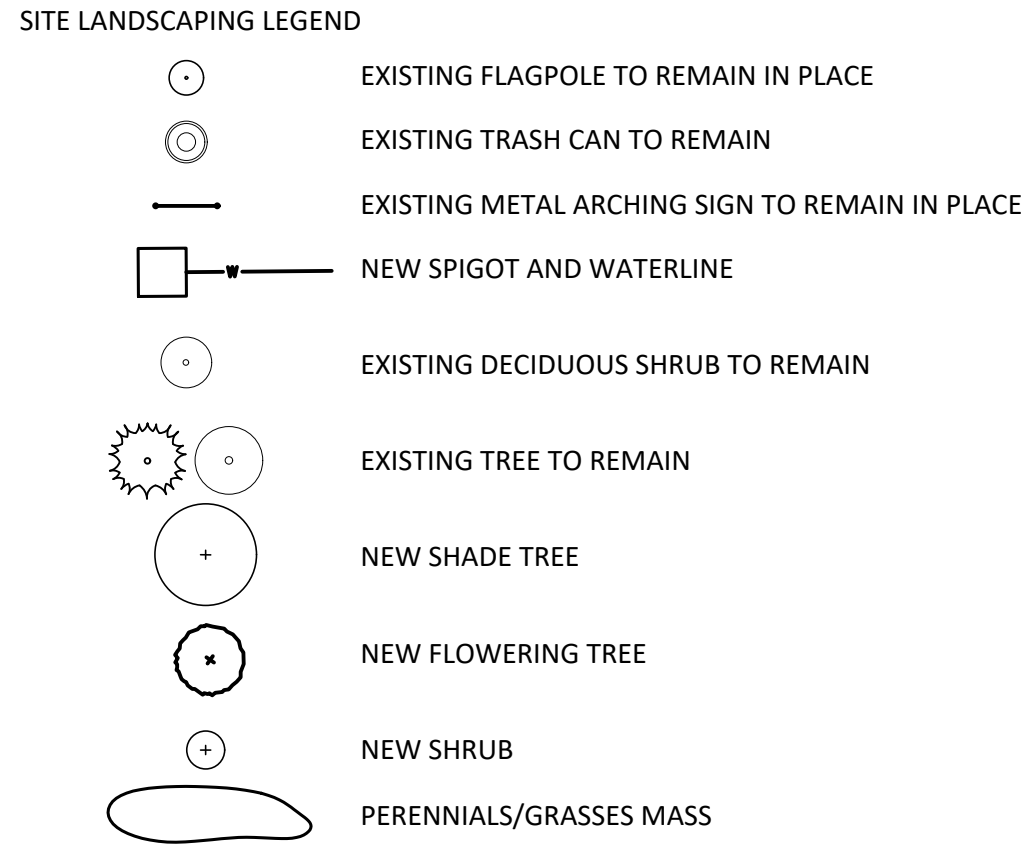


Date
AUGUST 2025

Scale
1" = 10'-0"

Sheet Number
C120

Project Number	853.027.001
----------------	-------------



IT IS A VIOLATION OF THE NEW YORK STATE EDUCATION LAW, ARTICLE 145 §7209 SPECIAL PROVISIONS, FOR ANY PERSON UNLESS THEY ARE ACTING UNDER THE DIRECTION OF A LICENSED PROFESSIONAL ENGINEER, ARCHITECT, LANDSCAPE ARCHITECT, OR LAND SURVEYOR, TO ALTER AN ITEM IN ANY WAY. IF AN ITEM BEARING THE STAMP OF A LICENSED PROFESSIONAL IS ALTERED, THE ALTERING PROFESSIONAL SHALL STAMP THE DOCUMENT AND INCLUDE THE NOTATION "ALTERED BY" FOLLOWED BY THEIR SIGNATURE, THE DATE OF SUCH ALTERATION, AND A SPECIFIC DESCRIPTION OF THE ALTERATION

REVISIONS	

CITY OF PLATTSBURGH
VETERANS MEMORIAL PARK PROJECT

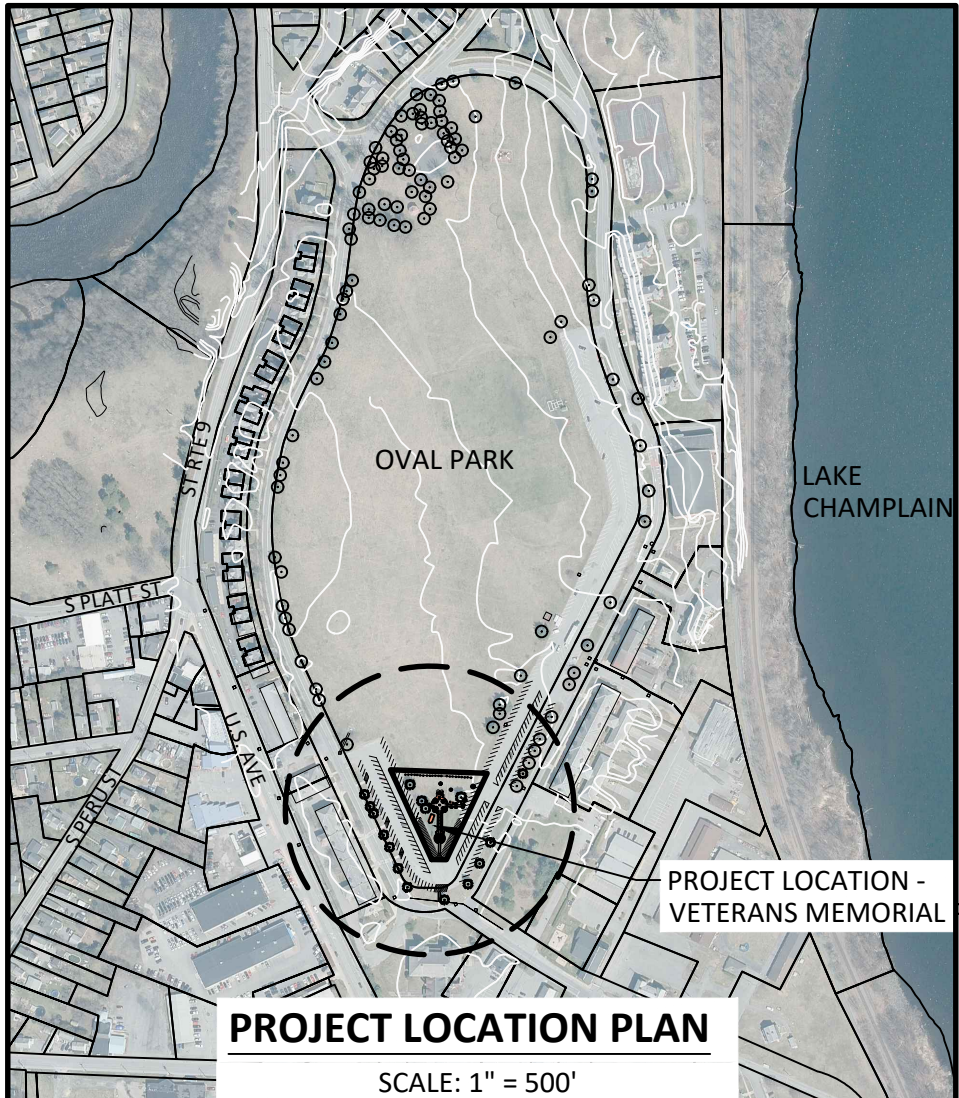
VETERANS MEMORIAL PARK - US OVAL PARK
SITE LANDSCAPING PLAN

CITY OF PLATTSBURGH
CLINTON COUNTY, NEW YORK

VETERANS MEMORIAL PARK - US OVAL PARK SITE LANDSCAPING PLAN

LANDSCAPING NOTES

1. ALL PLANT MATERIAL SHALL BE NURSERY-GROWN, HEALTHY, WELL-FORMED, AND FREE OF DISEASE OR PEST INFESTATION.
2. ALL PLANTS SHALL BE TRUE TO SPECIES AND VARIETY, AND MEET THE SIZE AND QUALITY SPECIFIED IN THE PLANT LIST.
3. CONTRACTOR SHALL VERIFY SITE CONDITIONS AND LOCATIONS OF UTILITIES PRIOR TO PLANTING. CALL 811 BEFORE DIGGING.
4. PLANT LOCATIONS SHOWN ON PLAN ARE DIAGRAMMATIC. FIELD ADJUST TO AVOID CONFLICTS AND TO ACHIEVE NATURALISTIC GROUPINGS, SUBJECT TO OWNER'S REPRESENTATIVE APPROVAL.
5. ALL TREES AND SHRUBS SHALL BE PLANTED PLUMB AND AT PROPER DEPTH WITH THE ROOT FLARE VISIBLE ABOVE FINISHED GRADE.
6. REMOVE ALL CONTAINERS, TWINE, STRAPS, AND BURLAP FROM THE TOP OF THE ROOTBALL PRIOR TO BACKFILLING.
7. BACKFILL PLANTING WITH NATIVATIVE SOIL UNLESS OTHERWISE NOTED. AMEND ONLY IF SOIL IS DEEMED UNSUITABLE.
8. APPLY 3" DEPTH OF SHREDDED HARDWOOD MULCH AROUND TREES AND SHRUBS. DO NOT PLACE MULCH IN CONTACT WITH TRUNKS OR STEMS.
9. DO NOT INSTALL PLANTS DURING FROZEN, SATURATED, OR EXTREME WEATHER CONDITIONS.
10. CONTRACTOR SHALL WATER ALL PLANTINGS THOROUGHLY AT THE TIME OF INSTALLATION AND AS REQUIRED DURING ESTABLISHMENT PERIOD.
11. CONTRACTOR SHALL MAINTAIN ALL PLANTINGS UNTIL FINAL ACCEPTANCE, INCLUDING WATERING, WEEDING, AND REPLACEMENT OF DEAD OR DECLINING PLANTS.
12. ANY SUBSTITUTIONS OF SPECIFIED PLANT MATERIAL MUST BE APPROVED BY THE OWNER'S REPRESENTATIVE.



Planting Schedule - Base Bid						
Qty.	Key	Botanical Name	Common Name	Size	Roots	Notes/Spacing
Deciduous Shrubs						
6	CA	<i>Ceanothus americanus</i>	New Jersey Tea	2' HT.	Container	Full; Matching
Perennials and Grasses						
14	EP	<i>Echinacea purpurea</i>	Purple Coneflower	#1 gal.	Container	Full; 18" O.C.
14	SO	<i>Symphytotrichum oblongifolium</i>	Aromatic Aster	#1 gal.	Container	Full; 18" O.C.
14	SS	<i>Schizachyrium scoparium</i> 'Standing Ovation'	Little Bluestem	#1 gal.	Container	Full; 24" O.C.

