

SITE OF WORK



CITY OF PLATTSBURGH  
DEPARTMENT OF PUBLIC WORKS  
CLINTON COUNTY, NEW YORK

# LOCAL PEDESTRIAN SAFETY ACTION PLAN

## JANUARY 2023

### PROJECT LOCATION

THE PROJECT IS LOCATED AT THE FOLLOWING FIVE INTERSECTIONS  
IN THE CITY OF PLATTSBURGH:

1. CORNELIA STREET (NYS ROUTE 3) AT N. CATHERINE STREET
2. CORNELIA STREET (NYS ROUTE 3) AT BEEKMAN STREET

CONTRACTOR'S NAME _____	
AWARD DATE _____	
COMPLETION DATE _____	
FINAL ACCEPTANCE DATE _____	
CITY ENGINEER _____	
RESIDENT ENGINEER _____	
FINAL COST TOTAL _____	
FISCAL SHARE	COST(S)
1	_____
2	_____
3	_____



PREPARED AND RECOMMENDED BY:

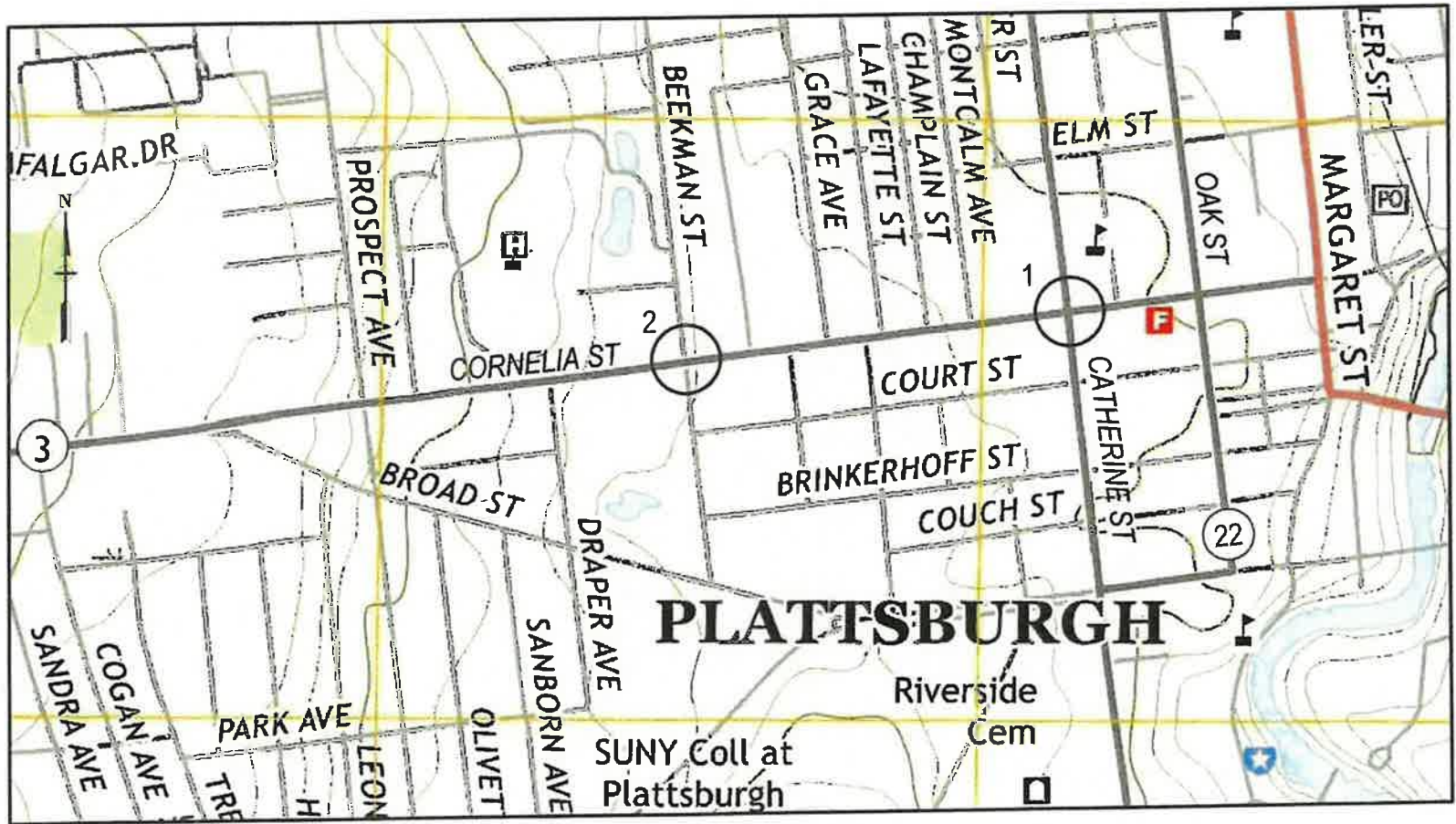
*Todd E. Humphrey* 1/12/23



C&S Engineers, Inc.  
21 Arkansas Street  
Plattsburgh, NY 12901  
Phone: 315-465-2000  
Fax: 315-465-9667  
www.cscor.com

DATE

### PROJECT LOCATION MAP



APPROVED BY: CITY OF PLATTSBURGH

*Christopher Rosenquest*  
CHRISTOPHER ROSENQUEST  
MAYOR  
DATE

THE LATEST REVISIONS OF THE STANDARD SHEETS MAINTAINED BY THE NEW YORK STATE DEPARTMENT OF TRANSPORTATION, WHICH ARE CURRENT ON THE DATE OF ADVERTISEMENT FOR BIDS, SHALL BE CONSIDERED TO BE IN EFFECT. ALL PAY ITEMS AND WORK CONTAINED IN THE CONTRACT AND ANY ADDITIONAL PAY ITEMS AND WORK ENCOUNTERED DURING THE COURSE OF THE CONTRACT SHALL BE SUBJECT TO THE APPLICABLE STANDARD SHEET(S) UNLESS OTHERWISE SPECIFIED IN THE CONTRACT DOCUMENTS.

ALL WORK CONTEMPLATED UNDER THIS CONTRACT IS TO BE COVERED BY AND IN CONFORMITY WITH THE STANDARD SPECIFICATIONS (US CUSTOMARY) REFERENCED IN THE CONTRACT PROJECT "PROPOSAL" EXCEPT AS MODIFIED BY THESE PLANS OR BY CHANGES SET FORTH IN THE CONTRACT PROJECT "PROPOSAL."

CONTRACT PLANS HAVE BEEN DESIGNED IN ACCORDANCE WITH NYSOT POLICIES AND GUIDE LINES AND THE FINAL DESIGN REPORT APPROVED ON 2/27/2020.

IT IS A VIOLATION OF LAW FOR ANY PERSON, UNLESS THEY ARE ACTING UNDER THE DIRECTION OF A LICENSED PROFESSIONAL ENGINEER, ARCHITECT, LANDSCAPE ARCHITECT, OR LAND SURVEYOR, TO ALTER AN ITEM IN ANY WAY. IF AN ITEM BEARING THE STAMP OF A LICENSED PROFESSIONAL IS ALTERED, THE ALTERING ENGINEER, ARCHITECT, LANDSCAPE ARCHITECT, OR LAND SURVEYOR SHALL STAMP THE DOCUMENT AND INCLUDE THE NOTATION "ALTERED BY" FOLLOWED BY THEIR SIGNATURE, THE DATE OF SUCH ALTERATION, AND A SPECIFIC DESCRIPTION OF THE ALTERATION.

### MAINTENANCE RESPONSIBILITY

THE CITY OF PLATTSBURGH WILL BE RESPONSIBLE FOR MAINTENANCE OF THE ROADWAY, SIDEWALKS, AND TRAFFIC SIGNALS CONSTRUCTED UNDER THIS CONTRACT.

### NYSOT STANDARD SHEETS

608-01, 609-03, 619-02, 619-04, 619-10, 619-11, 619-12, 619-51, 619-61, 645-01, 645-03, 645-14, 680-01, 680-02, 680-04, 680-06, 680-10, 680-13, 685-01

LOCAL PEDESTRIAN SAFETY ACTION PLAN		
FIVE SIGNALIZED INTERSECTIONS		
CITY OF PLATTSBURGH		
COUNTY: CLINTON		
FED. ROAD REG. NO.	STATE	SHEET NO.
1	N.Y.	1
CAPITAL PROJECT IDENTIFICATION NO.	70PS.03	
INDEX ON SHEET NO.	2	

Jan 11, 2023 -- 10:47am  
F:\Project\A64 -- City of Plattsburgh\Design\A6401001 -- Local PS&P Five Intersections\Design\CADD\Sheet Files\Re-Bld Jan 2023\70PS03\_ila\_01.dwg

FEATURE	SYMBOL
ALIGNMENT	
CONTROL (CENTERLINE)	
CENTER OF CURVATURE	
POINT OF CURVATURE	
POINT OF INTERSECTION	
POINT OF BEGINNING	
POINT OF CURVATURE	
POINT OF END	
POINT ON TANGENT	
POINT OF VERTICAL CURVATURE	
VERTICAL EVENT POINT	
VERTICAL HIGH POINT	
VERTICAL LOW POINT	
CONTROL	
BASELINE	
BASELINE, PROJECTION	
BASELINE, POINT	
BASELINE, POINT ON LINE	
BASELINE, SPUR POINT	
BASELINE, TIE POINT	
BENCHMARK	
POINT, SURVEY MARKER, PERM.	
DRAINAGE	
CATCH BASIN	
FIRE HYDRANT	
CATCH BASIN ROUND	
STORM LINE	
LANDSCAPE	
BOULDER	
DECIDUOUS TREE	
DECIDUOUS SHRUB	
BUILDING	
HEDGE ROW	
PLANTER BED	
PROPERTY LINE	
WOOD LINE	
CHAINLINK FENCE	
STOCKAID FENCE	
RAILING	
ROW MAPPING	
HIGHWAY BOUNDARY	
HIGHWAY BNDRY., APPROX.	
HIGHWAY BNDRY, PT.	
PT., FENCE LOCATION	
PT., IRON PIPE	
PT., IRON ROD	
PT., MONUMENT	
PT., NAIL	
PT., RAILROAD SPIKE	
PT., SPIKE	

FEATURE	SYMBOL
ROW MAPPING	
PT., STAKE	
PT., TREE W/ WIRE	
PT., WALL LOCATION	
SIGNS	
SIGN	
MULTI POST SIGN	
POST	
TRAFFIC CONTROL	
ADA CROSSING PAD	
PULL BOX	
CONTROLLER	
PUSH BUTTON	
SIGN	
POLE	
PEDESTRIAN HEAD	
CONDUIT	
UTILITIES	
SANITARY SEWER MANHOLE	
UNKNOWN MANHOLE	
COMMUNICATION MANHOLE	
WATER VALVE	
GAS FILLCAP	
UNKNOWN VALVE	
MONITORING WELL	
ELECTRIC BOX	
ELECTRIC METER	
UTILITY POLE W/ LIGHT	
UTILITY POLE	
UTILITY POLE DEAD	
GUY WIRE	
PEDESTRIAN LIGHT POLE	
UTILITY LIGHT POLE	
UTILITY MARKOUT	
STORM MANHOLE	
OVERHEAD UTILITY LINE	
UNIDENTIFIED UTILITY LINE	
SANITARY LINE	
WATER LINE	
GAS LINE	
FIBER OPTIC LINE	
ROADWAY	
DROP CURB	

ALIGNMENT	
ABBR.	DESCRIPTION
AZ	AZIMUTH
B	BASELINE
C	CENTERLINE
R	RADIUS
UTILITIES	
ABBR.	DESCRIPTION
E	ELECTRIC
EMH	ELECTRIC MANHOLE
FO	FIBER OPTIC
G	GAS
GP	GUY POLE
GV	GAS VALVE (MAIN LINE)
HYD	HYDRANT
LP	LIGHT POLE
SA	SANITARY SEWER
SMH	SANITARY MANHOLE
ST	STORM SEWER
T	TELEPHONE
W	WATER
WV	WATER VALVE (MAIN LINE)
TOPOGRAPHY (MISCELLANEOUS)	
ABBR.	DESCRIPTION
AOBE	AS ORDERED BY ENGINEER
ASPH	ASPHALT
BLDG	BUILDING
BM	BENCH MARK
CONC	CONCRETE
EIC	ENGINEER IN CHARGE
EP	EDGE OF PAVEMENT
PED POLE	PEDESTRIAN POLE
ROW	RIGHT OF WAY
ST	STREET
SW	SIDEWALK
TYP	TYPICAL
TOPOGRAPHY (DRAINAGE)	
ABBR.	DESCRIPTION
BC	BOTTOM OF CURB
CB	CATCH BASIN
DIA	DIAMETER
ELEV	ELEVATION
MH	MANHOLE
TC	TOP OF CURB

STANDARD SYMBOL (PLANS)	ITEM PAYMENT UNIT: ESTIMATE OF QUANTITIES SHEET	EQUIVALENT NOMENCLATURE: (SPECS/PROPOSAL)
'	ft	LINEAR FEET
ft <sup>2</sup>	SF	SQUARE FEET
YD <sup>3</sup>	CY	CUBIC YARD
mi	MI	MILES
AC	AC	ACRES
lb	LB	POUND
TON	TON	TON
GAL	GAL	GALLON

INDEX		
SHEET NO.	DRAWING NO.	TITLE
1	-	TITLE SHEET
2	ILA-1	INDEX, LEGEND, AND ABBREVIATIONS
3	GN-1	GENERAL NOTES
4	EQ-1	ESTIMATE OF QUANTITIES
5	BLT-1	BASELINE TIES & BENCHMARKS
6 TO 8	WZTC-1 TO WZTC-3	WORK ZONE TRAFFIC CONTROL
9	MD-1	MISCELLANEOUS DETAILS
10 TO 11	TSP-1 TO TSP-2	TRAFFIC SIGNAL PLANS
12	TSN-1	TRAFFIC SIGNAL NOTES AND QUANTITIES
13	TSN-2	TRAFFIC SIGNAL DETAILS
14	TSN-3	TRAFFIC SIGNAL QUANTITIES
15 TO 16	CRD-1 TO CRD-2	CURB RAMP DETAILS



C&S Engineers, Inc.  
21 Arkansas Street  
Plattsburgh, New York 12903  
Phone: 315-455-2000  
Fax: 315-455-9667  
www.cscos.com



LOCAL PEDESTRIAN SAFETY  
ACTION PLAN  
CITY OF PLATTSBURGH  
CLINTON COUNTY, NEW YORK

MARK	DATE	DESCRIPTION
REVISIONS		
PROJECT NO: A54.001.001		
DATE: JANUARY 2023		
DRAWN BY: MNG		
DESIGNED BY: KAN		
CHECKED BY: TEH		
NO ALTERATION PERMITTED HEREON EXCEPT AS PROVIDED UNDER SECTION 7209 SUBDIVISION 2 OF THE NEW YORK EDUCATION LAW		

INDEX, LEGEND &  
ABBREVIATIONS

ILA-1



Jun 11, 2023 - 10:47am  
F:\Project\A54 - City of Plattsburgh\A54001001 - Local PS&P Five Intersections\Design\CADD\Sheet Files\Re-Bid Jan 2023\709S03\_gnn\_01.dwg

GENERAL NOTES

- CONSTRUCTION AND MATERIALS SPECIFICATIONS: STANDARD SPECIFICATIONS, CONSTRUCTION AND MATERIALS, NEW YORK STATE DEPARTMENT OF TRANSPORTATION, OFFICE OF ENGINEERING, DATED JANUARY 1, 2023 WITH CURRENT ADDITIONS AND MODIFICATIONS, EXCEPT AS MODIFIED BY THE "CONSTRUCTION CONTRACT DOCUMENTS".
- THE CONTRACTOR SHALL PERFORM ALL WORK WITH CARE SO THAT ANY MATERIALS WHICH ARE TO REMAIN IN PLACE, OR WHICH ARE TO REMAIN THE PROPERTY OF THE CITY, WILL NOT BE DAMAGED. IF THE CONTRACTOR DAMAGES ANY MATERIALS WHICH ARE TO REMAIN IN PLACE, OR WHICH ARE TO REMAIN THE PROPERTY OF THE CITY, THE DAMAGED MATERIALS SHALL BE REPAIRED OR REPLACED IN A MANNER SATISFACTORY TO THE ENGINEER AT THE EXPENSE OF THE CONTRACTOR.
- IT SHALL BE THE CONTRACTOR'S RESPONSIBILITY TO FIELD VERIFY ALL EXISTING CONDITIONS AND DIMENSIONS PRIOR TO THE START OF WORK AND/OR PREPARATION OF SHOP DRAWINGS. THE CONTRACTOR SHALL REPORT ANY DISCREPANCIES TO THE ENGINEER IMMEDIATELY AND PRIOR TO THE START OF CONSTRUCTION ACTIVITIES.
- WHENEVER ITEMS IN THE CONTRACT REQUIRE MATERIALS TO BE REMOVED AND DISPOSED OF, THE COST OF SUPPLYING A DISPOSAL AREA AND TRANSPORTATION TO THAT AREA SHALL BE INCLUDED IN THE UNIT PRICES BID FOR THOSE ITEMS.
- THE COST OF ALL JOINT MATERIAL SHALL BE INCLUDED IN THE UNIT PRICES BID FOR THE VARIOUS ITEMS OF THE CONTRACT, UNLESS OTHERWISE SPECIFIED ON THE PLANS.
- ALL DISTURBED AREAS SHALL BE RESTORED BY THE TREATMENT SHOWN ON THE PLANS, BY TOPSOIL AND SEEDING, OR AS ORDERED BY ENGINEER. GRADING SHALL BE SHAPED TO ALLOW SURFACE DRAINAGE TO RETURN TO ITS ORIGINAL CONDITION.
- TYPICAL WORK LIMITS ARE SHOWN ON THE PLANS. ACTUAL LIMITS OF WORK SHALL BE DETERMINED IN THE FIELD AT THE TIME OF CONSTRUCTION. THE ENGINEER SHALL DEFINE SPECIFIC LIMITS WHERE QUESTIONS ARISE.
- THE ROADWAY SHALL BE KEPT CLEAN OF MUD AND DEBRIS AT ALL TIMES.
- MATERIALS, EQUIPMENT AND VEHICLES SHALL NOT BE STORED OR PARKED WITHIN THE HIGHWAY RIGHT-OF-WAY BEFORE WORK BEGINS OR AFTER CONTRACTOR'S OPERATIONS ARE SHUT DOWN. STAGING AREAS OUTSIDE THE RIGHT-OF-WAY SHALL BE USED TO STOCKPILE ALL CONSTRUCTION MATERIALS, DURING WORKING HOURS, NO CONSTRUCTION MATERIAL MAY BE STORED OR PLACED ON THE ROADWAY OR ROADBED EXCEPT WITHIN A PROTECTED WORK AREA.

DEFINITIONS

- THE WORDS "SHALL", "SHOULD", AND "MAY", AS USED IN THE CONTRACT DOCUMENTS, HAVE THE FOLLOWING MEANINGS:  
  
SHALL - A MANDATORY CONDITION. IN THE DESIGN, APPLICATION, OR LOCATION OF DEVICES REQUIREMENTS HAVING "SHALL" STIPULATIONS ARE MANDATORY. NO DISCRETION IN FOLLOWING THEM IS ALLOWED.  
  
SHOULD - AN ADVISORY CONDITION. WHERE "SHOULD" IS USED IN RELATION TO A PROVISION, THAT PROVISION IS RECOMMENDED, AND NORMALLY IS TO BE FOLLOWED, BUT IS NOT MANDATORY. DEVIATION FROM SUCH PROVISIONS IS PERMISSIBLE IF, AND TO THE EXTENT, THERE IS JUSTIFIABLE CAUSE TO DO SO.  
  
MAY - A PERMISSIVE CONDITION. NO REQUIREMENT FOR DESIGN OR APPLICATION IS INTENDED.

HIGHWAY WORK PERMITS

- THE CONTRACTOR SHALL BE RESPONSIBLE FOR OBTAINING ALL REQUIRED STATE, COUNTY, AND MUNICIPAL PERMITS WITHIN HIGHWAY RIGHTS-OF-WAY.

HOURS OF OPERATION

- WORK HOURS SHALL BE LIMITED TO BETWEEN 7 AM AND 7 PM. NO NIGHT WORK IS ALLOWED UNDER THIS CONTRACT. CONTRACTOR SHALL ABIDE BY ALL LOCAL NOISE ORDINANCES.

SUBMISSION GUIDELINES

- ALL SHOP DRAWINGS, DETAILS AND COMPUTATION SHEETS SUBMITTED FOR THIS CONTRACT SHALL BE IN U.S CUSTOMARY UNITS.
- THE CONTRACTOR SHALL SUBMIT ALL SHOP DRAWINGS, DETAILS AND COMPUTATION SHEETS TO THE ENGINEER FOR APPROVAL. THE ENGINEER SHALL BE PERMITTED THE LONGEST OF THE FOLLOWING TIME LIMITS TO RENDER A DECISION ON THE CONTRACTOR' SUBMISSION:  
  
A. TEN (10) WORKING DAYS  
  
B. TWO (2) WORKING DAYS FOR EACH DRAWING OF A SET OF DRAWINGS OR  
  
C. ONE (1) WORKING DAY FOR EVERY FOUR (4) COMPUTATION SHEETS. ANY SHEET WRITTEN ON BOTH SIDES WILL BE CONSIDERED TWO (2) COMPUTATION SHEETS.
- ALL THE TIME LIMITS WILL BE MEASURED BASED UPON THE RECEIPT OF ALL REQUIRED INFORMATION BY THE ENGINEER.
- UPON APPROVAL, ONE (1) SET OF DRAWINGS AND COMPUTATIONS SHALL BE FURNISHED BY THE CONTRACTOR TO THE ENGINEER FOR THEIR RECORDS.

STAGING AREAS

- THERE ARE NO AREAS WITHIN THE CONTRACT LIMITS AVAILABLE FOR STAGING EQUIPMENT OR OPERATIONS.

SURVEY CONTROL

- CONTRACTOR IS RESPONSIBLE FOR ALL SURVEY NEEDED TO COMPLETE THE WORK. PAYMENT FOR SURVEY WORK WILL BE MADE UNDER ITEM 625.01-SURVEY OPERATIONS.
- ALL RIGHT-OF-WAY MONUMENTS AND PROPERTY CORNERS ARE TO BE PROTECTED, SAFEGUARDED AND PRESERVED. ANY RIGHT-OF-WAY OR PROPERTY CORNERS THAT ARE DISTURBED BY CONTRACTOR'S OPERATIONS SHALL BE REPLACED BY A NYS LICENSED SURVEYOR AT THE CONTRACTOR'S EXPENSE.

EXISTING DRAINAGE FACILITIES

- THE CONTRACTOR SHALL BECOME ACQUAINTED WITH THE DRAINAGE CHARACTERISTICS OF THE AREA IN ORDER TO PROGRESS WORK EFFICIENTLY WITH FULL KNOWLEDGE OF THE POTENTIAL DRAINAGE PROBLEMS.
- THE CONTRACTOR SHALL ENSURE ALL EXISTING DRAINAGE SYSTEMS, INCLUDING CATCH BASINS AND CULVERTS, ARE KEPT CLEAN AND FREE FLOWING FOR THE DURATION OF THE CONTRACT, AT NO COST TO THE CITY (UNLESS OTHERWISE SPECIFIED).

UTILITIES

- THE CONTRACTOR SHALL BE RESPONSIBLE FOR PROTECTING AND MAINTAINING SERVICE OF ALL UTILITIES ENCOUNTERED IN THE WORK AREA. THE CONTRACTOR SHALL BE FULLY RESPONSIBLE FOR ALL DISRUPTIONS TO UTILITY SERVICE CAUSED BY THE CONTRACTOR'S OPERATIONS. DAMAGE TO EXISTING UTILITIES AND APPURTENANCES RESULTING FROM THE CONTRACTOR'S OPERATIONS SHALL BE RESTORED, AT THE CONTRACTOR'S SOLE EXPENSE, TO THE OWNER'S SATISFACTION OR AS ORDERED BY THE ENGINEER.
- IN THE EVENT THE CONTRACTOR DAMAGES AN EXISTING UTILITY SERVICE, CAUSING AN INTERRUPTION IN SAID SERVICE, THE CONTRACTOR SHALL IMMEDIATELY BEGIN WORK TO RESTORE SERVICE AND SHALL NOT CEASE SUCH WORK UNTIL SERVICE IS RESTORED.
- THE CONTRACTOR SHALL BE RESPONSIBLE FOR LOCATING ALL UTILITIES, INCLUDING STREET LIGHTING CONDUITS, TRAFFIC SIGNAL CONDUITS ETC. PRIOR TO DRIVING SIGN POSTS OR EXCAVATING WITHIN THE LIMITS OF THE CONTRACT. THE COST OF REPAIRING DAMAGE TO CONDUITS, CONDUCTORS AND APPURTENANCES SHALL BE PAID FOR BY THE CONTRACTOR.
- THE APPROXIMATE LOCATION OF THE UNDERGROUND UTILITIES ARE SHOWN ON THE PLANS. THE CONTRACTOR SHALL VERIFY THE TRUE LOCATION BEFORE COMMENCING WORK. THE UTILITY LOCATION QUALITY LEVEL DEFINITION SHOWN ON THESE PLANS DEFINED AS FOLLOWS:  
  
QUALITY LEVEL C - RECORD INFORMATION PROVIDED BY UTILITY OWNERS WAS PLOTTED ON THE CONTRACT PLANS. DEPTHS WERE NOT FIELD VERIFIED. PHYSICAL SURFACE FEATURES LIKE MANHOLES, VALVE BOXES AND HYDRANTS HAVE BEEN FIELD LOCATED.

SIGNS

- ALL SIGNS SHALL BE MAINTAINED BY THE CONTRACTOR AND AS DIRECTED BY THE ENGINEER.
- IF EXISTING SIGNS ARE DAMAGED AS A RESULT OF THE CONTRACTOR'S OPERATIONS, THE CONTRACTOR SHALL SUPPLY A NEW SIGN, MEETING THE SAME STANDARD, AT NO COST TO THE OWNER.

RIGHT OF WAY

- ALL WORK TO BE PERFORMED UNDER THIS CONTRACT WILL BE WITHIN THE PUBLIC RIGHT-OF-WAY (ROW) IN ACCORDANCE WITH SECTION 105-15 OF THE STANDARD SPECIFICATIONS. THE CONTRACTOR IS TO ASSURE HIMSELF THAT ALL WORK IS BEING PERFORMED WITHIN THE ROW, INCLUDING BUT NOT LIMITED TO VEHICLE ACCESS; STORAGE OF EQUIPMENT, MATERIALS, DEBRIS AND WASTE; LANDSCAPING; VEGETATION REMOVAL AND MANAGEMENT; GRADING, SEEDING AND THE INSTALLATION OF TURF; AND THE INSTALLATION OF ANY FENCES OR PROTECTIVE BARRIER.
- IF CONTRACTOR IS UNABLE TO IDENTIFY THE LIMITS OF THE RIGHTS-OF-WAY WHEN THE CONTRACT CALLS FOR WORK IN THOSE VICINITIES, THE CONTRACTOR MUST CONTACT THE ENGINEER IN CHARGE FOR DEFINITIVE BOUNDARY DETERMINATIONS BEFORE ANY WORK MAY BE INITIATED AT THOSE LOCATIONS (STANDARD SPECIFICATIONS SECTIONS 105-10 AND 625).
- IN ACCORDANCE WITH SECTION 105-15 OF THE STANDARD SPECIFICATIONS, RELEASES FOR ANY NON-ESSENTIAL CONTRACT WORK OUTSIDE OF THE EXISTING RIGHTS-OF-WAY, INCLUDING PLANTINGS, LANDSCAPING OR DRIVEWAY ENHANCEMENT, WILL BE PROVIDED BY THE PROJECT ENGINEER AND IN NO INSTANCE ARE TO BE SECURED BY THE CONTRACTOR. THE CONTRACTOR SHALL NOT INVADE UPON PRIVATE PROPERTIES, LANDS OR BUILDINGS OUTSIDE OF THE RIGHTS-OF-WAY FOR ANY REASON WITHOUT FIRST SECURING WRITTEN PERMISSION FROM THE PROPERTY OWNER (STANDARD SPECIFICATIONS SECTION 105-15).
- THE CONTRACTOR WILL BE HELD LIABLE FOR ANY DAMAGES DONE. ANY SUCH INJURIES OR DAMAGES SHALL BE SATISFACTORILY REPAIRED OR ITEMS REPLACED AT THE CONTRACTOR'S EXPENSE (STANDARD SPECIFICATIONS SECTION 107-08).

DISPOSAL OF CONSTRUCTION AND DEMOLITION DEBRIS

- THERE ARE NO AREAS WITHIN THE CONTRACT LIMITS AVAILABLE FOR DISPOSAL OF DEBRIS.

HAZARDOUS WASTE AND CONTAMINATED MATERIALS

- THE CONTRACTOR SHOULD BE AWARE THAT THE PROJECT SITES HAVE BEEN SCREENED AND NYSDEC RECORDS INDICATE A FUEL SPILL AT THE NORTHEAST CORNER OF CORNELIA AND BROAD STREETS (STEWART'S SHOPS). THE INCIDENT IS CLOSED AND NO CONTAMINATED SOIL IS EXPECTED TO BE ENCOUNTERED. IF THE CONTRACTOR ENCOUNTERS ANY SUSPECT SOIL, NOTIFY THE ENGINEER IN CHARGE IMMEDIATELY.

TEMPORARY SOIL EROSION AND SEDIMENT CONTROL NOTES

- THROUGHOUT THE DURATION OF THE CONTRACT, CONTRACTOR SHALL PROTECT ALL WATER COURSES FROM WATER BORNE SEDIMENT OR POLLUTANTS ORIGINATING FROM ANY WORK DONE IN SUPPORT OF THIS PROJECT.
- IN ACCORDANCE WITH SECTIONS 107-12 AND 209-3.01 OF THE NYSDOT STANDARD SPECIFICATIONS, THE CONTRACTOR SHALL DESIGNATE AN EROSION AND SEDIMENT CONTROL SUPERVISOR FOR THE PROJECT. THE SUPERVISOR SHALL BE RESPONSIBLE FOR IMPLEMENTING THE EROSION AND SEDIMENT CONTROL MEASURES AND FOR INSPECTING AND MAINTAINING THE CONTROL MEASURES. THE NAME AND QUALIFICATIONS (TRAINING AND EXPERIENCE) OF THIS INDIVIDUAL SHALL BE SUBMITTED TO THE ENGINEER FOR APPROVAL PRIOR TO STARTING EARTHWORK.
- EROSION AND SEDIMENT CONTROL MEASURES SHALL BE INSTALLED PRIOR TO ANY SOIL DISTURBANCE FOR WHICH THEY ARE INTENDED AND SHALL REMAIN IN PLACE UNTIL SOILS ARE PERMANENTLY STABILIZED.
- NO WET OR FRESH CONCRETE, LEACHATE, MATERIAL, OR DEBRIS SHALL BE ALLOWED TO ESCAPE INTO A WATER BODY OR WETLAND, NOR SHALL WASHINGS FROM CONCRETE TRUCKS, MIXERS OR OTHER DEVICES BE ALLOWED TO ENTER WATER BODY OR WETLAND. ANY MATERIAL OR DEBRIS ACCIDENTALLY DROPPED INTO THE CHANNEL SHALL BE IMMEDIATELY AND COMPLETELY REMOVED AND DEPOSITED IN AN UPLAND AREA.
- THE CONTRACTOR SHALL COVER TEMPORARY STOCKPILES OF ERODIBLE MATERIAL (SUCH AS TOPSOIL OR EARTH FILL) WITH POLY SHEETING, OR RING THE STOCKPILES WITH SILT FENCE TO CONTROL EROSION. POLY SHEETING SHALL COMPLETELY COVER THE STOCKPILE AND BE SECURELY ANCHORED AT ALL TIMES. ANY POLY SHEETING OR SILT FENCE THAT IS DAMAGED SHALL BE PROMPTLY REPAIRED OR REPLACED AS DIRECTED BY THE ENGINEER. RINGED STOCKPILES EXPOSED OR EXPECTED TO BE EXPOSED FOR LONGER THAN 7 CALENDAR DAYS SHALL IMMEDIATELY BE STABILIZED WITH APPROPRIATE MEASURES. THE COST OF COVERING AND RINGING/STABILIZING STOCKPILES SHALL BE INCLUDED IN THE PRICE BID FOR THE CORRESPONDING STOCKPILED MATERIAL.

EMERGENCY REPAIRS

- THE CONTRACTOR SHALL PROVIDE THE LOCAL POLICE THE NAME, ADDRESS AND TELEPHONE NUMBER OF A PERSON OR PERSONS AUTHORIZED OUTSIDE THE NORMAL CONTRACT WORKING HOURS TO SECURE AND USE LABOR, MATERIAL AND EQUIPMENT FOR EMERGENCY REPAIRS TO MAKE SAFE THE ENTIRE AREA OF THE CONTRACT. DUPLICATE COPIES OF SUCH NOTICES SHALL BE FILED WITH THE RESIDENT ENGINEER, AND CITY OF PLATTSBURGH.

CONCRETE MANAGEMENT NOTES

- STORE CONCRETE, GROUT, AND MORTAR UNDER COVER AND AWAY FROM DRAINAGE AREAS.
- CONCRETE TRUCKS AND TRANSFER CHUTES MAY BE WASHED OUT ON-SITE IN AN AREA APPROVED BY THE EIC. UTILIZE A CONCRETE WASHOUT TO COLLECT ALL WASH WATER AND CONCRETE WASTE.
- THE WASHOUT AREA SHALL BE LOCATED AWAY FROM STORM DRAINS, OPEN DITCHES OR WATER BODIES.
- UPON COMPLETION OF THE CONCRETE WORK, BREAK UP, REMOVE, AND HAUL AWAY SOLID CONCRETE THAT HAS ACCUMULATED IN THE WASHOUT.
- PREVENT WET OR FRESH CONCRETE OR LEACHATE FROM REACHING WATERS OF NYS. DO NOT WASH CONCRETE TRUCKS, MIXERS, OR ANY OTHER DEVICES AT A LOCATION THAT LEADS TO WATERS OF NYS.

FUEL AND EQUIPMENT STORAGE NOTES

- ALL CONSTRUCTION MATERIALS AND EQUIPMENT SHALL BE STORED IN AN AREA APPROVED BY THE ENGINEER.
- FUEL STORAGE SHALL BE CONDUCTED IN ACCORDANCE WITH APPLICABLE LOCAL, STATE, AND FEDERAL REGULATIONS.
- ON SITE VEHICLE AND EQUIPMENT FUELING SHOULD ONLY OCCUR IN A DESIGNATED FUEL STORAGE AREA. SUBSTITUTE LOCATIONS MAY BE USED SUBJECT TO APPROVAL BY THE ENGINEER.
- VEHICLE AND EQUIPMENT FUELING (INCLUDING FUELING OF HAND HELD EQUIPMENT) SHALL BE CONDUCTED IN ACCORDANCE WITH THE FOLLOWING:  
  
A. AWAY FROM STORM DRAIN INLETS, DRAINAGE FACILITIES, OR WATERCOURSES.  
  
B. WITHIN A BERMED AREA TO PREVENT RUN-ON, RUNOFF, AND TO CONTAIN SPILLS.  
  
C. STORE PORTABLE FUEL CONTAINERS FOR HAND HELD EQUIPMENT IN A TUB OR EQUIVALENT DEVICE TO AVOID SPILLS AND LEAKS.  
  
D. USE SECONDARY CONTAINMENT TECHNIQUES FOR FUELING OF HAND HELD OR PORTABLE EQUIPMENT, SUCH AS DRAIN PANS OR DROP CLOTHS TO CATCH SPILLS OR LEAKS.  
  
E. SIGNAGE THAT FUEL TANKS SHOULD NOT BE "TOPPED OFF". AN ADEQUATE SUPPLY OF SPILL CLEAN UP MATERIALS SHALL BE READILY ACCESSIBLE TO ALL FUELING ACTIVITIES.

ASBESTOS

- ALL SITES HAVE BEEN SCREENED FOR THE PRESENCE OF ASBESTOS CONTAINING MATERIALS. NONE WERE FOUND BUT MAY STILL EXIST. IF THE CONTRACTOR ENCOUNTERS SUSPECT MATERIALS, NOTIFY THE ENGINEER IN CHARGE IMMEDIATELY. IF NECESSARY, SCREENING, TESTING, AND ABATEMENT WILL BE PERFORMED AND PAID UNDER FORCE ACCOUNT.



C&S Engineers, Inc.  
21 Arkansas Street  
Plattsburgh, New York 12903  
Phone: 315-455-2000  
Fax: 315-455-9667  
www.cscos.com



LOCAL PEDESTRIAN SAFETY  
ACTION PLAN  
CITY OF PLATTSBURGH  
CLINTON COUNTY, NEW YORK

MARK	DATE	DESCRIPTION
REVISIONS		
PROJECT NO: A54.001.001		
DATE: JANUARY 2023		
DRAWN BY: MNG		
DESIGNED BY: KAN		
CHECKED BY: TEH		
NO ALTERATION PERMITTED HEREON EXCEPT AS PROVIDED UNDER SECTION 7209 SUBDIVISION 2 OF THE NEW YORK EDUCATION LAW		

GENERAL  
NOTES

GNN-1

SHEET 3 OF 16

Jan 11, 2023 - 10:47am  
F:\Project\A64 - City of Plattsburgh\A54001001 - Local P&AP Five Intersections\Design\CADD\Sheet Files\Re-Bid Jan 2023\70P503\_eq\_01.dwg

TABLE OF QUANTITIES				
ITEM	DESCRIPTION	UNIT	QUANTITIES	
			PROP.	AS-BUILT
203.02	UNCLASSIFIED EXCAVATION AND DISPOSAL	CY	12	
203.03	EMBANKMENT IN PLACE	CY	5	
206.03	CONDUIT EXCAVATION AND BACKFILL INCLUDING SURFACE RESTORATION	LF	70	
608.0101	CONCRETE SIDEWALKS AND DRIVEWAYS	CY	12	
608.2100003	CAST IRON EMBEDDED DETECTABLE WARNING UNITS	SY	16	
619.01	BASIC WORK ZONE TRAFFIC CONTROL	LS	NEC	
619.04	TYPE III CONSTRUCTION BARRICADE	EA	8	
619.1613	MAINTAIN TRAFFIC SIGNAL EQUIPMENT (REQUIREMENT C)	INTM	2	
625.01	SURVEY OPERATIONS	LS	NEC	
635.0103	CLEANING AND PREPARATION OF PAVEMENT SURFACES - LINES	LF	3070	
645.81	TYPE A SIGN POSTS	EA	1	
645.85	POLE MOUNTED SIGN SUPPORT SYSTEM (BAND MOUNTED)	EA	1	
647.31	RELOCATE SIGN PANEL, SIGN PANEL ASSEMBLY SIZE I (UNDER 30 SQUARE FEET)	EA	1	
647.61	REMOVE AND DISPOSE GROUND MOUNTED TYPE A SIGN SUPPORT(S), FOUNDATIONS, AND ANY ATTACHED SIGNS - SIZE I (UNDER 30 SF)	EA	1	
680.5001	POLE EXCAVATION AND CONCRETE FOUNDATION	CY	3.2	
680.510501	PULLBOX - RECTANGULAR, 26" X 18", REINFORCED CONCRETE	EA	5	
680.520106	CONDUIT, METAL STEEL, ZINC COATED, 2 NPS	LF	70	
680.520108	CONDUIT, METAL STEEL, ZINC COATED, 3 NPS	LF	440	
680.53	CONDUIT JACKING OR BORING	LF	440	
680.6708	TRAFFIC SIGNAL POLE POST TOP MOUNT, 8 FEET MOUNTING HEIGHT	EA	8	
680.730714	SIGNAL CABLE 7 CONDUCTORS, 14 AWG	LF	1780	
680.78010005	ALTER PULLBOX FOR CONDUITS	EA	4	
680.813103	PEDESTRIAN SIGNAL SECTION - TYPE 1, 12 INCH	EA	32	
680.813105	PEDESTRIAN SIGNAL MODULE - 12 INCH, BI-MODAL HAND/MAN SYMBOLS, LED	EA	16	
680.81330010	ACCESSIBLE PEDESTRIAN SIGNAL (APS) WITHOUT POLE	EA	16	
680.8142	PEDESTRIAN SIGNAL POST TOP MOUNT ASSEMBLY	EA	8	
680.81500010	PEDESTRIAN COUNTDOWN TIMER MODULE	EA	16	
680.8204	OVERHEAD SIGN ASSEMBLY, TYPE D	EA	2	
685.11120009	EPOXY REFLECTORIZED PAVEMENT STRIPES 20 MILS - HAND WORK	LF	2380	
697.03	FIELD CHANGE PAYMENT	DC	13000	
698.04	ASPHALT PRICE ADJUSTMENT	DC	100	
698.05	FUEL PRICE ADJUSTMENT	DC	100	
698.06	STEEL/IRON PRICE ADJUSTMENT	DC	100	
699.040001	MOBILIZATION	LS	NEC	



C&S Engineers, Inc.  
21 Arkansas Street  
Plattsburgh, New York 12903  
Phone: 315-455-2000  
Fax: 315-455-9667  
www.cscos.com



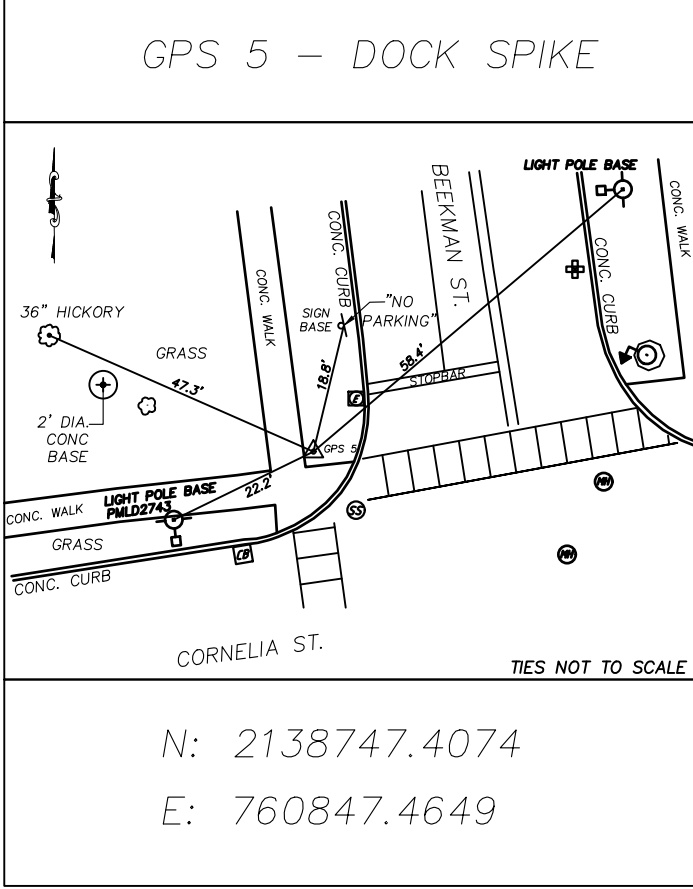
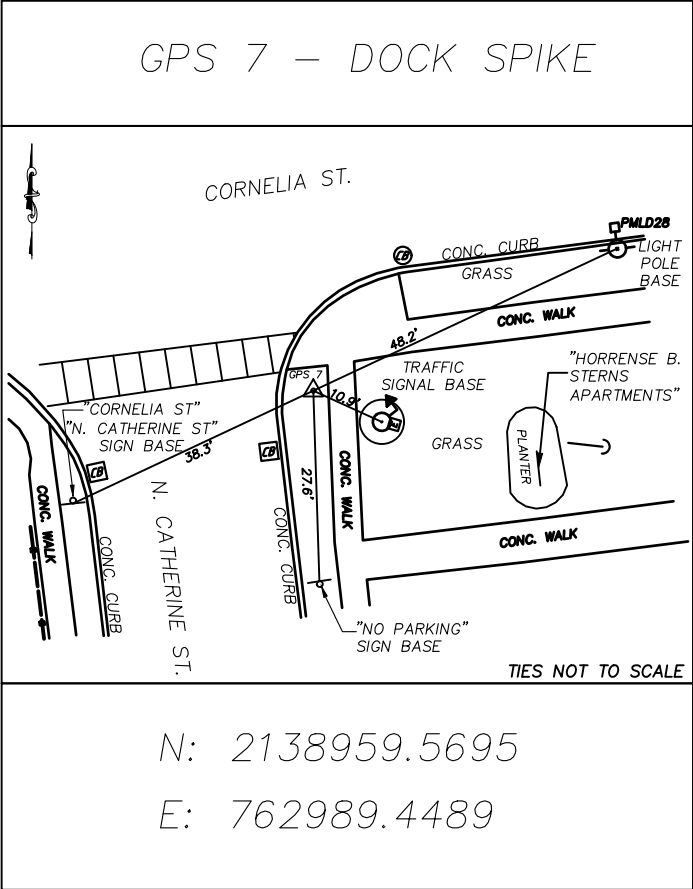
LOCAL PEDESTRIAN SAFETY  
ACTION PLAN  
CITY OF PLATTSBURGH  
CLINTON COUNTY, NEW YORK

MARK	DATE	DESCRIPTION
REVISIONS		
PROJECT NO: A54.001.001		
DATE: JANUARY 2023		
DRAWN BY: MNG		
DESIGNED BY: KAN		
CHECKED BY: TEH		
NO ALTERATION PERMITTED HEREON EXCEPT AS PROVIDED UNDER SECTION 7209 SUBDIVISION 2 OF THE NEW YORK EDUCATION LAW		

ESTIMATE OF  
QUANTITIES

EQ-1

Jan 11, 2023 - 10:47am  
F:\Project\A64 - City of Plattsburgh\A54001001 - Local PS&P Five Intersections\Design\CADD\Sheet Files\Re-Bld Jan 2023\70P503\_blt\_01.dwg



GENERAL NOTES:

- COORDINATES ARE REFERENCED TO NORTH AMERICAN DATUM OF 1983, (NAD83/ 2011), NEW YORK STATE PLANE COORDINATE SYSTEM EAST ZONE (3101).
- THE VERTICAL DATUM REFERENCED TO THE NORTH AMERICAN VERTICAL DATUM OF 1988.
- CONTOUR INTERVAL = 1 FOOT.
- INFORMATION SHOWN HEREON IS FROM A FIELD SURVEY COMPLETED BY M.J. ENGINEERING AND LAND SURVEYING P.C. ON AUGUST 5TH THROUGH AUGUST 9TH, 2019.
- UNDERGROUND UTILITIES SHOWN HEREON WERE LOCATED BASED ON VISIBLE EVIDENCE AT GROUND LEVEL ONLY AND DO NOT PURPORT TO SHOW ALL UTILITIES, ANY AND ALL UTILITIES SHOWN ARE SUBJECT TO VERIFICATION BY EXCAVATION.
- UNAUTHORIZED ALTERATIONS OR ADDITION TO THIS SURVEY MAP IS A VIOLATION OF SECTION 7209 OF THE NEW YORK STATE EDUCATION LAW. COPIES OF THIS SURVEY MAP NOT BEARING THE LAND SURVEYORS SEAL AND SIGNED WITH INK SHALL NOT BE CONSIDERED TO BE VALID COPIES.
- TRAFFIC SIGNAL CONDUITS AND DETECTION LOOPS WERE DERIVED FROM THE CITY'S RECORD PLANS AND ADDED TO THE BASE MAPPING BY C&S ENGINEERS IN FEBRUARY 2020.

BENCHMARK TABLE			
NO.	ELEV.	DESCRIPTION	INTERSECTION
BM 3	172.327'	X-CUT FIRE HYDRANT EAST BOLT	CORNELIA STREET AND BEEKMAN STREET
BM 4	153.305'	EXISTING X-CUT FIRE HYDRANT SOUTHWEST POLE	CORNELIA STREET AND N CATHERINE STREET



C&S Engineers, Inc.  
21 Arkansas Street  
Plattsburgh, New York 12903  
Phone: 315-455-2000  
Fax: 315-455-9667  
www.cscos.com



LOCAL PEDESTRIAN SAFETY  
ACTION PLAN  
CITY OF PLATTSBURGH  
CLINTON COUNTY, NEW YORK

MARK	DATE	DESCRIPTION
REVISIONS		
PROJECT NO: A54.001.001		
DATE: JANUARY 2023		
DRAWN BY: MNG		
DESIGNED BY: KAN		
CHECKED BY: TEH		
NO ALTERATION PERMITTED HEREON EXCEPT AS PROVIDED UNDER SECTION 7209 SUBDIVISION 2 OF THE NEW YORK EDUCATION LAW		

BASELINE TIES &  
BENCHMARKS

BLT-1

SHEET 5 OF 16



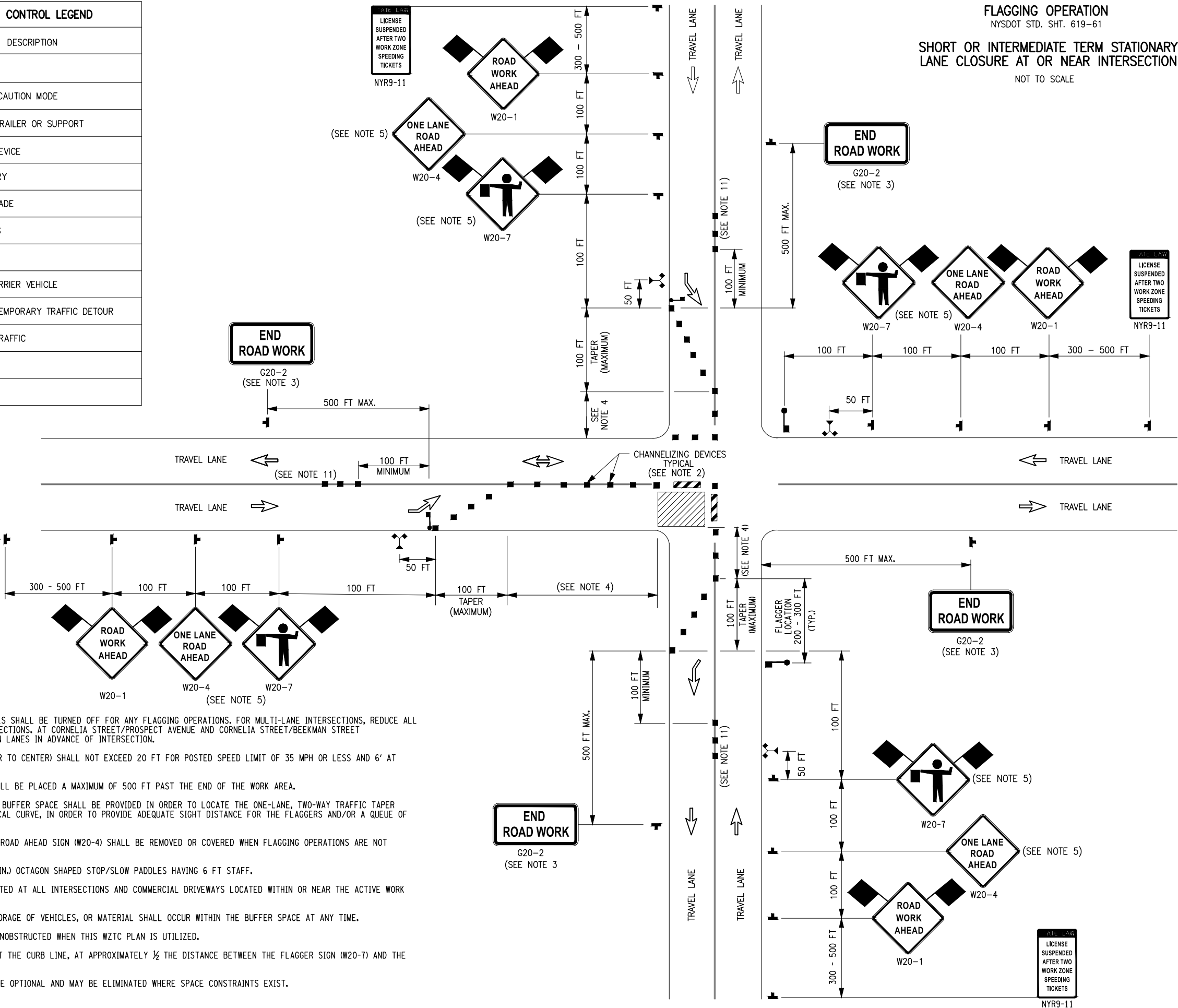


Jan 11, 2023 - 10:48am  
F:\Project\A64 - City of Plattsburgh\A54001001 - Local P&AP Five Intersections\Design\A54001001 Sheet Files\Re-Bid Jan 2023\70P503\_wztc\_02.dwg

WORK ZONE TRAFFIC CONTROL LEGEND	
SYMBOL	DESCRIPTION
	ARROW PANEL
	ARROW PANEL, CAUTION MODE
	ARROW PANEL TRAILER OR SUPPORT
	CHANNELIZING DEVICE
	SIGN, TEMPORARY
	TYPE III BARRICADE
	WARNING LIGHTS
	WORK SPACE
	SHADOW OR BARRIER VEHICLE
	DIRECTION OF TEMPORARY TRAFFIC DETOUR
	DIRECTION OF TRAFFIC
	FLAGGER
	FLAG TREE

NOTES:

1. AT SIGNALIZED INTERSECTIONS, SIGNALS SHALL BE TURNED OFF FOR ANY FLAGGING OPERATIONS. FOR MULTI-LANE INTERSECTIONS, REDUCE ALL APPROACHES TO ONE LANE IN ALL DIRECTIONS. AT CORNELIA STREET/PROSPECT AVENUE AND CORNELIA STREET/BEEKMAN STREET INTERSECTIONS, CLOSE OFF LEFT TURN LANES IN ADVANCE OF INTERSECTION.
2. CHANNELIZING DEVICE SPACING (CENTER TO CENTER) SHALL NOT EXCEED 20 FT FOR POSTED SPEED LIMIT OF 35 MPH OR LESS AND 6' AT INTERSECTIONS AND DRIVEWAYS.
3. THE END ROAD WORK SIGN (G20-2) SHALL BE PLACED A MAXIMUM OF 500 FT PAST THE END OF THE WORK AREA.
4. WHERE DIRECTED BY THE ENGINEER, A BUFFER SPACE SHALL BE PROVIDED IN ORDER TO LOCATE THE ONE-LANE, TWO-WAY TRAFFIC TAPER PRIOR TO ANY HORIZONTAL OR VERTICAL CURVE, IN ORDER TO PROVIDE ADEQUATE SIGHT DISTANCE FOR THE FLAGGERS AND/OR A QUEUE OF STOPPED VEHICLES.
5. FLAGGER SIGN (W20-7) AND ONE LANE ROAD AHEAD SIGN (W20-4) SHALL BE REMOVED OR COVERED WHEN FLAGGING OPERATIONS ARE NOT OCCURRING.
6. ALL FLAGGERS SHALL USE 24 INCH (MIN.) OCTAGON SHAPED STOP/SLOW PADDLES HAVING 6 FT STAFF.
7. ADDITIONAL FLAGGERS SHALL BE LOCATED AT ALL INTERSECTIONS AND COMMERCIAL DRIVEWAYS LOCATED WITHIN OR NEAR THE ACTIVE WORK AREA.
8. NO WORK ACTIVITY, EQUIPMENT, OR STORAGE OF VEHICLES, OR MATERIAL SHALL OCCUR WITHIN THE BUFFER SPACE AT ANY TIME.
9. SIDEWALKS SHALL REMAIN OPEN AND UNOBSTRUCTED WHEN THIS WZTC PLAN IS UTILIZED.
10. THE FLAG TREE SHALL BE LOCATED AT THE CURB LINE, AT APPROXIMATELY 1/2 THE DISTANCE BETWEEN THE FLAGGER SIGN (W20-7) AND THE FLAGGER.
11. CENTERLINE CHANNELIZING DEVICES ARE OPTIONAL AND MAY BE ELIMINATED WHERE SPACE CONSTRAINTS EXIST.



FLAGGING OPERATION  
NYSDOT STD. SHT. 619-61  
SHORT OR INTERMEDIATE TERM STATIONARY  
LANE CLOSURE AT OR NEAR INTERSECTION  
NOT TO SCALE

**C&S**  
COMPANIES

C&S Engineers, Inc.  
21 Arkansas Street  
Plattsburgh, New York 12903  
Phone: 315-455-2000  
Fax: 315-455-9667  
www.cscos.com

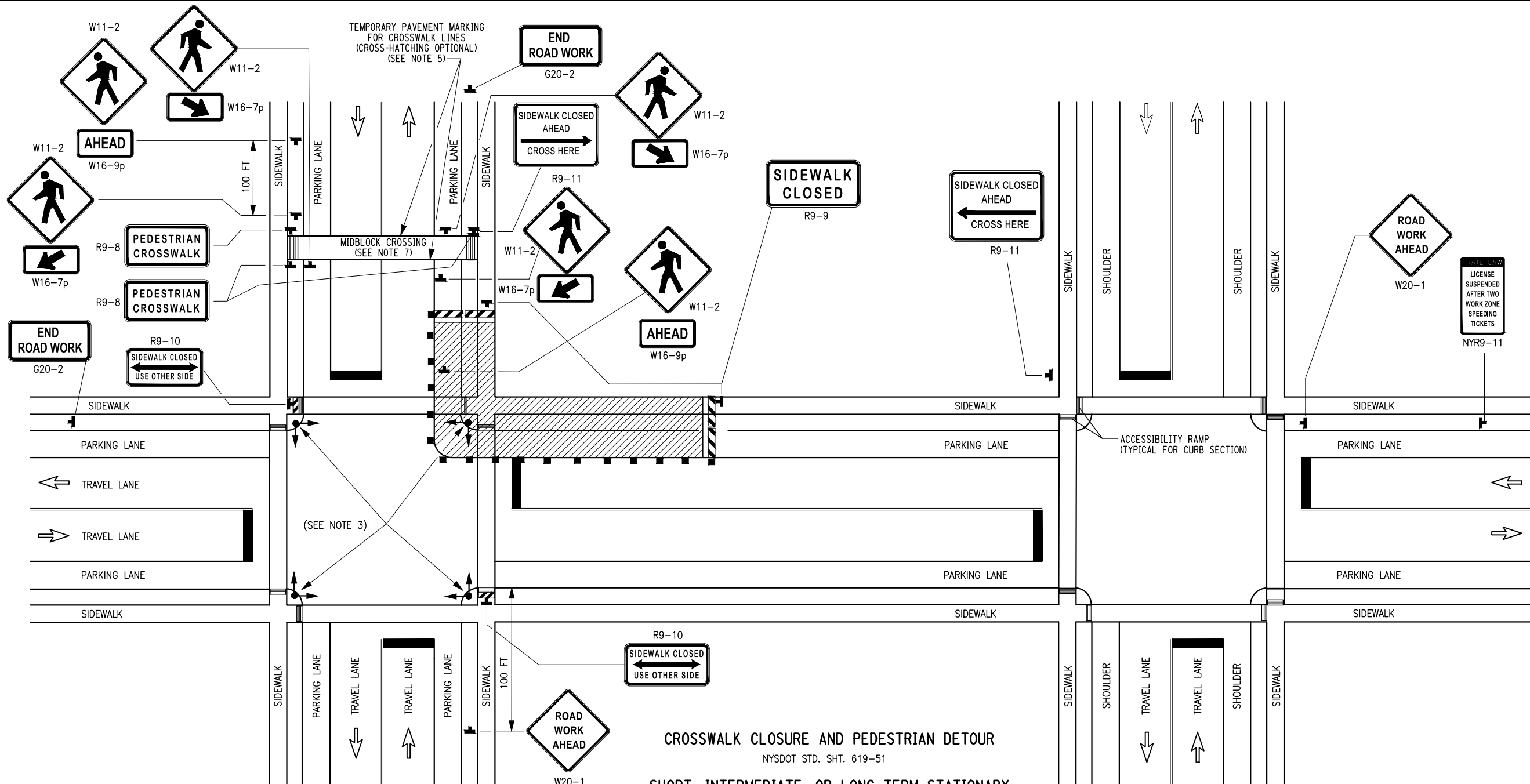


LOCAL PEDESTRIAN SAFETY  
ACTION PLAN  
CITY OF PLATTSBURGH  
CLINTON COUNTY, NEW YORK

MARK	DATE	DESCRIPTION
REVISIONS		
PROJECT NO: A54.001.001		
DATE: JANUARY 2023		
DRAWN BY: MNG		
DESIGNED BY: KAN		
CHECKED BY: TEH		
NO ALTERATION PERMITTED HEREON EXCEPT AS PROVIDED UNDER SECTION 7209 SUBDIVISION 2 OF THE NEW YORK EDUCATION LAW		

WORK ZONE  
TRAFFIC  
CONTROL PLAN

Jan 11, 2023 - 10:48am  
F:\Project\A4 - City of Plattsburgh\A54001001 - Local Road Five Intersections\Design\CD\Sheet Files\Re-Bld Jan 2023\70P503\_wztc\_03.dwg



- NOTES:
- MIDBLOCK CROSSING AND INTERSECTION CROSSING ARE TWO DIFFERENT SOLUTIONS, BUT SHOWN ON THE SAME DETAIL AS OPTIONS.
  - WHEN CROSSWALKS OR OTHER PEDESTRIAN FACILITIES ARE CLOSED OR RELOCATED, TEMPORARY FACILITIES SHALL BE DETECTABLE AND SHALL INCLUDE ACCESSIBILITY FEATURES CONSISTENT WITH THE FEATURES PRESENT IN THE EXISTING FACILITY.
  - CURB PARKING SHALL BE PROHIBITED FOR AT LEAST 50 FT IN ADVANCE OF THE MID-BLOCK CROSSWALK.
  - PEDESTRIAN TRAFFIC SIGNAL DISPLAYS CONTROLLING CLOSED CROSSWALKS SHALL BE COVERED OR DEACTIVATED.
  - FOR NIGHTTIME CLOSURES, FLASHING WARNING LIGHTS SHALL BE USED ON BARRICADES SUPPORTING SIGNS AND CLOSING SIDEWALKS. ILLUMINATION LEVEL 2 ARE REQUIRED FOR R9-8, R9-10 AND R9-11 SIGNS PER SECTION 619 OF THE STANDARD SPECIFICATIONS.
  - FOR LONG-TERM STATIONARY WORK, THE DOUBLE YELLOW CENTERLINE AND/OR LANE LINES SHALL BE COVERED BETWEEN THE TEMPORARY CROSSWALK LINES.
  - AREA SHALL BE RECONSTRUCTED TO BE ACCESSIBLE TO PEDESTRIANS.
  - ALL MID-BLOCK CROSSINGS REQUIRE THE APPROVAL OF THE CITY DPW.
  - TYPE III BARRICADES MAY BE SUBSTITUTED FOR TYPE II BARRICADES AS PER 619 STANDARD SPECIFICATIONS.
  - ONLY THE WORK ZONE TRAFFIC CONTROL DEVICES RELATED TO PEDESTRIANS ARE SHOWN. OTHER DEVICES SUCH AS LANE CLOSURE SIGNING OR ROAD NARROWS SIGN (W5-4) MAY BE REQUIRED.

CROSSWALK CLOSURE AND PEDESTRIAN DETOUR  
NYSDOT STD. SHT. 619-51  
SHORT, INTERMEDIATE, OR LONG TERM STATIONARY  
CROSSWALK CLOSURE ON 2-LANE 2-WAY ROADWAY  
NOT TO SCALE

WORK ZONE TRAFFIC CONTROL LEGEND			
SYMBOL	DESCRIPTION	SYMBOL	DESCRIPTION
	ARROW PANEL		WORK SPACE
	ARROW PANEL, CAUTION MODE		SHADOW OR BARRIER VEHICLE
	ARROW PANEL TRAILER OR SUPPORT		DIRECTION OF TEMPORARY TRAFFIC DETOUR
	CHANNELIZING DEVICE		DIRECTION OF TRAFFIC
	SIGN, TEMPORARY		FLAGGER
	TYPE III BARRICADE		FLAG TREE
	WARNING LIGHTS		



C&S Engineers, Inc.  
21 Arkansas Street  
Plattsburgh, New York 12903  
Phone: 315-455-2000  
Fax: 315-455-9667  
www.cscos.com



LOCAL PEDESTRIAN SAFETY  
ACTION PLAN  
CITY OF PLATTSBURGH  
CLINTON COUNTY, NEW YORK

MARK	DATE	DESCRIPTION
REVISIONS		
PROJECT NO:	A54.001.001	
DATE:	JANUARY 2023	
DRAWN BY:	MNG	
DESIGNED BY:	KAN	
CHECKED BY:	TEH	
NO ALTERATION PERMITTED HEREON EXCEPT AS PROVIDED UNDER SECTION 7209 SUBDIVISION 2 OF THE NEW YORK EDUCATION LAW		

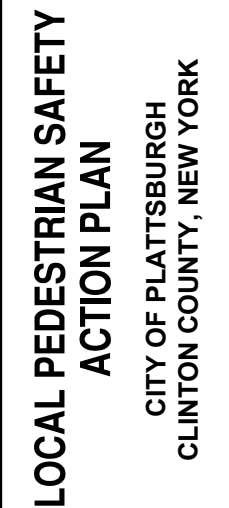
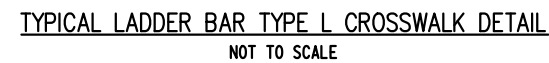
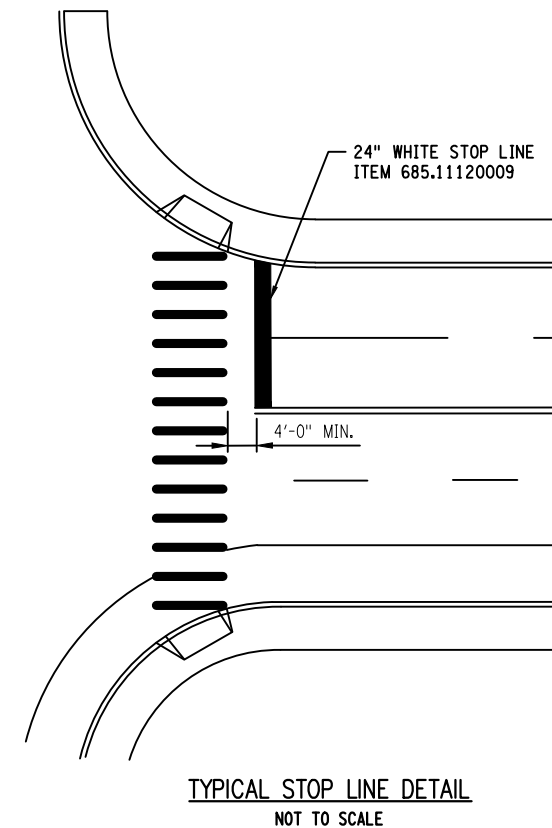
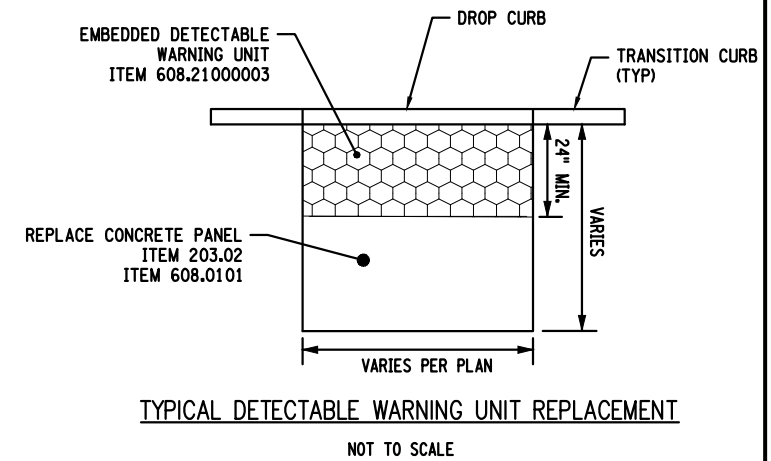
WORK ZONE  
TRAFFIC  
CONTROL PLAN

WZTC-3

SHEET 8 OF 16






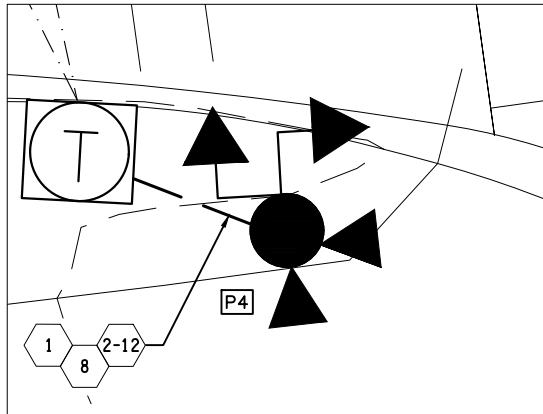
1. THE CONTRACTOR SHALL INSTALL NEW SIDEWALK, CURB RAMPS, AND CAST IRON EMBEDDED DETECTABLE WARNING UNITS THAT MEET ADA STANDARDS, AS SHOWN ON THE PLANS. THE NEW SIDEWALK SHALL CONNECT FLUSH TO THE EXISTING SIDEWALKS.
2. CURB RAMPS SHALL BE BUILT TO AND FOLLOW THE NYSDOT 608-01 STANDARD SHEETS.
3. THE SIDEWALK DEPTH SHALL BE 6" FOR RADIUS SLABS AND 4" FOR ALL OTHER SLABS.
4. ITEM 610.16010020 SHALL BE USED ADJACENT TO NEW SIDEWALK TO MATCH EXISTING CONDITIONS.
5. PEDESTRIAN POLES SHALL BE INSTALLED ADJACENT TO SIDEWALKS AND LANDINGS.
6. SEE DWGS. CRD-1 TO CRD-2 FOR CURB RAMP LAYOUTS.
7. THE DETAILS AND DIMENSIONS PROVIDED ARE APPROXIMATE TO ACHIEVE ADA COMPLIANT RAMPS. THE CONTRACTOR SHALL FIELD VERIFY ALL DIMENSIONS AND GRADES TO ENSURE COMPLIANCE WITH ADA REQUIREMENTS. SEE STANDARD SHEET 608-01 FOR CROSS SLOPE REQUIREMENTS ON ALL SIDEWALKS AND RAMPS.
8. IF LAYOUTS REQUIRE ADJUSTMENT DUE TO FIELD CONDITIONS, NOTIFY ENGINEER IMMEDIATELY.
9. SIDEWALK REMOVALS SHALL END AT AN EXISTING JOINT.
10. ARROWS ON RAMPS REPRESENT DOWN GRADE DIRECTION. SEE STANDARD SHEET 608-01 FOR RUNNING SLOPE REQUIREMENTS OF A CURB RAMP.
11. USE RADIAL CAST IRON DETECTABLE WARNING UNITS IF MANUFACTURED AT THE RADIUS OF THE CURB ABUTTING THE UNIT. DETECTABLE WARNING FIELDS COMPRISED OF CUT AND SPLICED SECTIONS SHALL NOT BE PERMITTED.
12. AREAS OF PERMANENT SIDEWALK REMOVAL ARE TO BE RESTORED WITH ITEM 610.16010020. IN GRASS AREAS, THE PERIMETER AREA AT PROPOSED SIDEWALK REMOVAL AND REPLACEMENT SHALL BE RESTORED WITH A 2'-0" STRIP OF ITEM 610.16010020.
13. ALL DETECTABLE WARNING SURFACES SHALL BE 2'-0" BY 5'-0" MINIMUM.
14. NEW CURB SHALL BE FLUSH ACROSS CURB RAMP.
15. THE EXCAVATION DEPTH WILL BE THE DEPTH FROM THE TOP OF ROAD TO THE TOP OF EXISTING SUBBASE. ALL EXISTING PAVEMENT LAYERS ARE TO BE REMOVED AND REPLACED WITH ITEM 304.12.

SHEET 9 OF 16

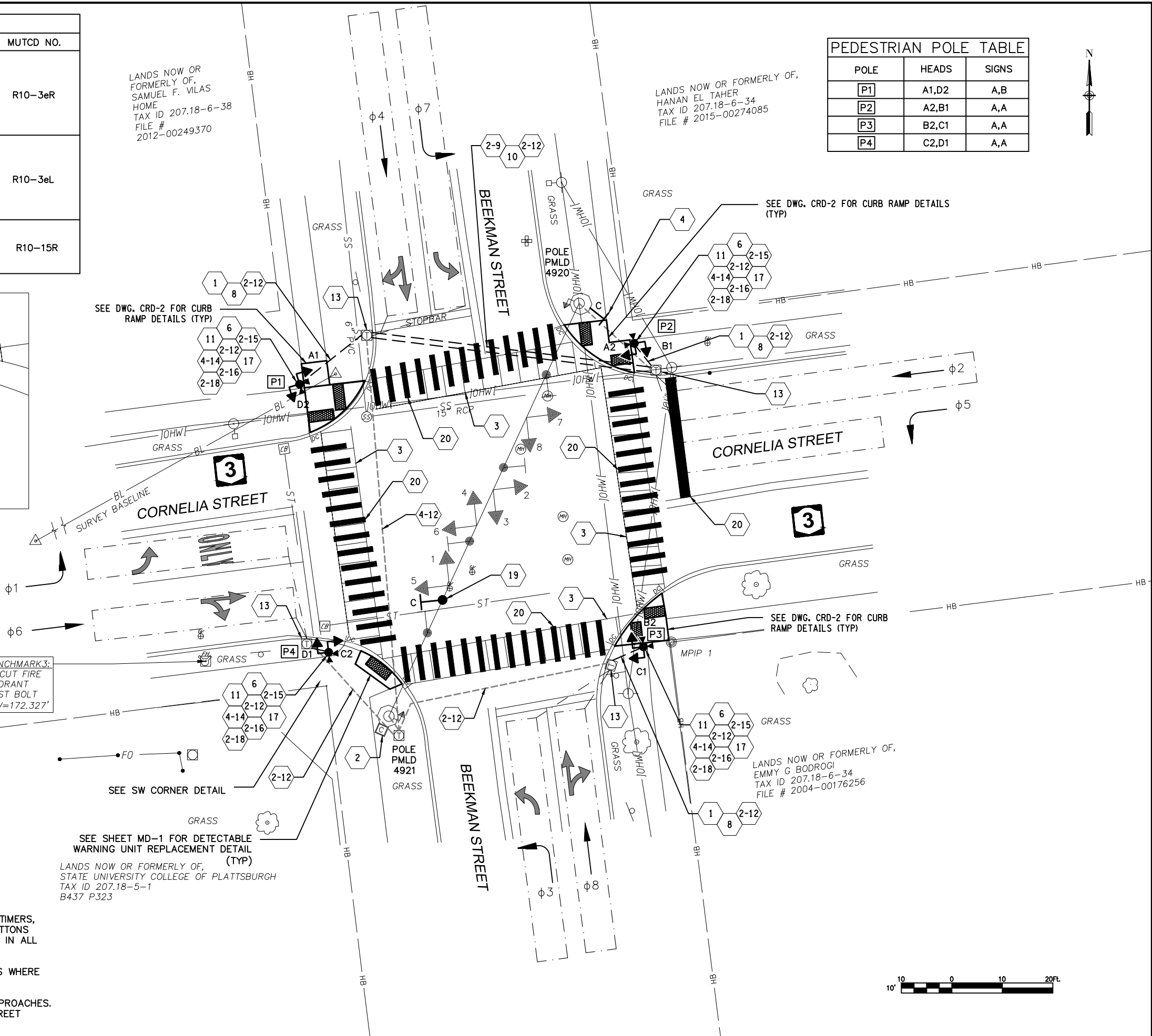


Jun 11, 2023 - 10:48am  
F:\Project\454 - City of Plattsburgh\454001001 - Local PS&P Five Intersections\Design\CD\Sheet Files\Re-Bid Jan 2023\70P503\_tsp\_02.dwg

TABLE OF SIGNS			
SIGN	SIZE (WxL, INCH)	TEXT	MUTCD NO.
A	9" X 15"		R10-3eR
B	9" X 15"		R10-3eL
C	30" X 30"		R10-15R



SW CORNER DETAIL



PROPOSED WORK:

1. INSTALL NEW BI-MODAL SIGNALS, COUNTDOWN TIMERS, AND ACCESSIBLE PEDESTRIAN SIGNAL PUSH BUTTONS AND SIGNS ON NEW PEDESTRIAN SIGNAL POSTS IN ALL QUADRANTS.
2. REPLACE EXISTING DETECTABLE WARNING FIELDS WHERE SHOWN.
3. PROVIDE NEW TYPE L CROSSWALKS ON ALL APPROACHES. PROVIDE NEW STOP BAR ACROSS CORNELIA STREET WESTBOUND APPROACH.

PEDESTRIAN POLE TABLE		
POLE	HEADS	SIGNS
P1	A1,D2	A,B
P2	A2,B1	A,A
P3	B2,C1	A,A
P4	C2,D1	A,A



C&S Engineers, Inc.  
21 Arkansas Street  
Plattsburgh, New York 12903  
Phone: 315-455-2000  
Fax: 315-455-9667  
www.cscos.com



LOCAL PEDESTRIAN SAFETY  
ACTION PLAN  
CITY OF PLATTSBURGH  
CLINTON COUNTY, NEW YORK

MARK	DATE	DESCRIPTION
REVISIONS		
PROJECT NO:	AS4.001.001	
DATE:	JANUARY 2023	
DRAWN BY:	MNG	
DESIGNED BY:	KAN	
CHECKED BY:	TEH	
NO ALTERATION PERMITTED HEREON EXCEPT AS PROVIDED UNDER SECTION 7209 SUBDIVISION 2 OF THE NEW YORK EDUCATION LAW		

TRAFFIC SIGNAL  
PLAN -  
CORNELIA STREET  
AND  
BEEKMAN STREET

TSP-2

SHEET 11 OF 16

Copyright ©



1. ANCHOR BOLT COVERS SHALL BE INSTALLED ON ALL NEW SIGNAL POLES IN SIDEWALK AREAS ONLY.
2. SIGNAL POLE FOOTER CONSTRUCTION, BACKFILL AND EXCAVATION LIMITS SHALL CONFORM TO STANDARD SHEET 680-01. PAYMENT SHALL BE MADE UNDER ITEM 680.5001 - POLE EXCAVATION AND CONCRETE FOUNDATION.
3. TEMPORARY CASING AND DRILLING MUD MAY BE REQUIRED TO EXCAVATE TO THE DESIGN ELEVATION.
4. EXPOSED FOUNDATION SURFACES SHALL BE FINISHED IN A WORKMAN LIKE MANNER. REINFORCEMENT BARS SHALL HAVE A MINIMUM OF 3 INCHES OF COVER. FOUNDATIONS SHALL BE AT THE SAME ELEVATION AS EXISTING OR PROPOSED FINISH WALKWAY SURFACES. FOUNDATIONS IN TURF AREAS SHALL BE 2 INCHES ABOVE FINAL GRADE.
5. MORTAR CAPS SHALL NOT BE USED.
6. BASE PLATES SHALL BE WRAPPED WITH A STAINLESS STEEL SCREEN. SCREEN OPENING SIZE SHALL BE APPROXIMATELY 1/4 INCH. THE SCREEN IS SECURED TO THE BASE PLATE WITH A STAINLESS STEEL BAND. THE SCREEN SHALL BE INSTALLED FROM THE FOUNDATION SURFACE TO JUST BELOW THE TOP OF THE BASE PLATE. THE SCREEN WRAPS THE FULL PERIMETER OF THE BASE PLATE WITH A 3 INCH OVERLAP. THE OVERLAP SHALL FACE AWAY FROM TRAFFIC.
7. SIGNAL POLE FOUNDATIONS SHALL CURE A MINIMUM OF 14 DAYS BEFORE THE POLE IS ERECTED AND A MINIMUM OF 28 DAYS BEFORE THE SIGNAL HEAD ASSEMBLIES, SPAN WIRE OR MAST ARMS ARE INSTALLED.

1. ALL CABLE SPLICES MADE IN CABLE RUNS TO BE LOCATED BELOW GROUND WILL BE ACCOMPLISHED USING METHOD NO. 2 (TWO COMPONENT ELECTRICAL INSULATING RESIN REJACKETING MATERIALS) AS DESCRIBED IN SECTION 680-3.16 OF THE N.Y.S. STANDARD SPECIFICATIONS.
2. EXTRA CONDUCTORS IN SIGNAL CABLE RUNS SHALL NOT BE CUT SHORT BUT WILL BE TAPED BACK ON ITS OWN CABLE FOR FUTURE USE.
3. OVERHEAD CABLE SPLICES WILL NOT BE ALLOWED.

1. CAPPED CONDUIT SHALL BE THE SIZE SHOWN ON THE PLANS AND SHALL EXTEND A MINIMUM OF 6 FEET OUTSIDE ALL POLE FOUNDATIONS OR PULLBOXES.
2. EXCAVATION FOR THE INSTALLATION OF UNDERGROUND CONDUIT IN PAVEMENT AREAS SHALL BE MADE WITH AN APPROPRIATE WHEEL EXCAVATOR. THE TRENCH WIDTH SHALL BE KEPT TO A MINIMUM AND THE DEPTH SHALL BE IN CONFORMANCE WITH THE N.Y.S. STANDARD SPECIFICATIONS.
3. IN PAVEMENT AREAS TRENCH BACKFILL SHALL BE CONTROLLED LOW STRENGTH MATERIAL TO THE BOTTOM OF THE ASPHALT COURSE. IT SHALL CONFORM TO THE N.Y.S. STANDARD SPECIFICATIONS.
4. ALL SPARE CONDUITS SHALL CONTAIN A CONTINUOUS POLY LINE TIED OFF IN THE PULL BOX AT EACH END.
5. ALL CONDUIT CONNECTIONS SHALL BE WATERTIGHT.
6. ALL SIGNAL CONDUITS SHALL BE BONDED WITH A #6 BARE STRANDED COPPER GROUND WIRE.
7. ALL COUPLINGS AND BUSHINGS SHALL BE MECHANICALLY THREADED. COMPRESSION OR SLIP TYPE COUPLINGS OR BUSHINGS SHALL NOT BE ALLOWED.
8. WHENEVER ITEM 206.03 CONDUIT EXCAVATION AND BACKFILL INCLUDING SURFACE RESTORATION INVOLVES SAW CUTTING ACROSS THE WIDTH OF THE SIDEWALK, THE AFFECTED SLABS SHALL BE FULLY REMOVED AND REPLACED. THE COST OF THIS WORK SHALL BE INCLUDED IN THIS ITEM.

1. DESIGN CLEARANCE UNDER ALL STRUCTURES SHALL HAVE A MINIMUM CLEARANCE OF 17 FEET.

1. ALL SIGNAL POLES OR PEDESTRIAN STATIONS SHALL BE GROUNDED IN CONFORMANCE WITH THE DETAILS SHOWN ON STANDARD SHEET 680-04, WITH THE EXCEPTION OF THE DETAIL "GROUND ROD INSTALLATION", THE "GROUND ROD INSTALLATION" DETAIL SHALL NOT BE INSTALLED IN THIS CONTRACT.
2. USE AT LEAST A 15 INCH DIAMETER REINFORCED CONCRETE PULLBOX FOR GROUNDING ROD INSTALLATION.
3. CLAY TILE PIPE DETAILED ON STANDARD SHEET 680-04 SHALL NOT BE USED.
4. GROUND WIRE FOR CABINETS OR POLES SHALL BE INSTALLED IN ITS OWN 1 INCH P.V.C. PLASTIC CONDUIT AND RUN TO THE NEAREST GROUND ROD LOCATION AS SHOWN ON STANDARD SHEET 680-04.
5. CONSTRUCTION SHALL COMPLY WITH THE NATIONAL ELECTRIC CODE.
6. ALL GROUND TESTING SHALL BE COMPLETED AND ACCEPTED PRIOR TO SIGNAL START UP.

1. OVERHEAD SIGNS:  
ALL ADDITIONAL MATERIALS REQUIRED FOR THE INSTALLATION OF OVERHEAD SIGN ASSEMBLIES SHALL BE INCLUDED IN THE PRICE BID FOR THE ITEM.
2. SIGNS SHALL BE MOUNTED SO THAT THEY ARE CENTERED AND FACING THE LANES THAT THEY REGULATE, SIGNAL HEADS SHALL BE LOCATED TO ALLOW FOR THIS CENTERED PLACEMENT OF THE SIGNS.
3. ANY LATERAL ADJUSTMENT TO PROPERLY ALIGN A STRUCTURE ON THE MAST ARM SHALL BE INCLUDED IN THE ITEMS ASSOCIATED WITH THAT STRUCTURE.

1. UNLESS OTHERWISE SHOWN, ALL PULLBOXES SHALL BE INSTALLED OUTSIDE OF THE PAVEMENT OR SHOULDER AREAS.
2. THE FINISHED GROUND SURFACE ON A BACK SLOPE IN THE VICINITY OF THE PULLBOX SHALL BE ADJUSTED SO THAT NO FILL SHALL SPILL ON THE TOP OF THE BOX AND THE MAXIMUM DISTANCE FROM THE TOP OF THE BOX TO THE FINISHED GROUND AT THE BOX SHALL NOT EXCEED 4 INCHES. ALL MATERIALS AND LABOR NECESSARY TO COMPLETE THIS WORK SHALL BE INCLUDED IN THE PRICE BID FOR THE PULLBOX.
3. ALL PULLBOXES INSTALLED IN THE SIDEWALK SHALL BE FLUSH WITH THE WALK.
4. MAXIMUM DEPTH TO CONDUIT ENTRANCE SHALL BE 3 FEET.

1. THE CONTRACTOR SHALL NOTIFY THE CITY OF PLATTSBURGH IN WRITING AT LEAST TEN (10) WORKING DAYS IN ADVANCE OF ANY OF HIS OPERATIONS THAT WILL AFFECT THE EXISTING SIGNAL, SUCH AS PAVEMENT REMOVAL OR NEW SIGNAL ITEM INSTALLATIONS. THE TRAFFIC DEPARTMENT SHALL PERFORM ALL NECESSARY WORK REQUIRED IN THE EXISTING CONTROLLER CABINET, HOWEVER, AT THE OVERHEAD REBUILD SITES THE CONTRACTOR WILL BE REQUIRED TO MAKE THE CONNECTIONS FOR THE OUTPUTS TO THE HEADS ON THE TERMINAL STRIP IN THE CABINET.
2. FINAL SIGNAL HEAD LOCATIONS SHALL BE FIELD REVIEWED AND APPROVED BY THE CITY OF PLATTSBURGH.
3. ALL WIRING SHALL BE COMPLETED IN A NEAT AND WORKMAN LIKE MANNER.

1. ALL SIGNAL CONDUITS SHALL BE BONDED WITH A #6 BARE STRANDED COPPER GROUND WIRE.
2. ALL COUPLINGS AND BUSHINGS SHALL BE MECHANICALLY THREADED. COMPRESSION OR SLIP TYPE COUPLINGS OR BUSHINGS SHALL NOT BE ALLOWED.
3. WHENEVER ITEM 206.03 CONDUIT EXCAVATION AND BACKFILL INCLUDING SURFACE RESTORATION INVOLVES SAW CUTTING ACROSS THE WIDTH OF THE SIDEWALK, THE AFFECTED SLABS SHALL BE FULLY REMOVED AND REPLACED. THE COST OF THIS WORK SHALL BE INCLUDED IN THIS ITEM.

1. ALL PEDESTRIAN PUSH BUTTONS SHALL CONFORM TO THE AMERICANS WITH DISABILITIES ACT (ADA) REQUIREMENTS.
2. ALL PEDESTRIAN PUSH BUTTONS SHALL BE LOCATED PARALLEL WITH THE APPROPRIATE CROSSWALK. ALSO, ALL INDICATIONS SHALL BE INSTALLED AWAY FROM TURNING VEHICULAR TRAFFIC UNLESS OTHERWISE SHOWN ON THE PLAN SHEET.
3. ALL PEDESTRIAN SIGNS SHALL BE 9 INCHES X 15 INCHES (R10-3e) REGARDLESS OF THE SIZE OF POLE THEY ARE INSTALLED ON AND SHALL BE ALUMINUM MATERIAL. SIGNS SHALL BE MOUNTED ON YELLOW BRACKET MATCHING COLOR OF PUSH BUTTON. THE COST OF FURNISHING AND INSTALLING THESE SIGNS SHALL BE INCLUDED IN THE BID PRICE FOR ITEM 680.81330010 - AUDIBLE PEDESTRIAN SIGNAL.
4. ON STANDARD SHEET NO. 680-10, ONLY TOP MOUNT POST INSTALLATION SHALL BE ALLOWED.
5. ON STANDARD SHEET NO. 680-10, THE PEDESTRIAN INDICATIONS SHALL BE BANDED TO THE POLE AND HAVE ONE BOLT THROUGH THE TOP BRACKET.
6. PEDESTRIAN HEAD HOUSINGS SHALL BE FEDERAL YELLOW IN COLOR.
7. PEDESTRIAN SIGNAL HEADS SHALL BE ALUMINUM AND MANUFACTURED BY PEEK TRAFFIC CORPORATION.
8. STANDARD SPECIFICATION 680.67XX IS MODIFIED ALLOWING ONLY ALUMINUM TRAFFIC SIGNAL POLES UNLESS OTHERWISE SHOWN ON THE PLANS.

1. THE CONTRACTOR SHALL BE RESPONSIBLE FOR COORDINATING ALL UTILITY WORK WITH THE RESPECTIVE OWNERS DURING CONSTRUCTION. THE COST OF THIS WORK SHALL BE INCLUDED IN THE PRICE BID FOR VARIOUS ITEMS IN THE CONTRACT.
2. CONTRACTOR IS TO CONTACT DIG SAFELY NEW YORK AT 811 FOR MARK OUT OF ALL UNDERGROUND SIGNAL CONDUIT AND LOOP WIRE PRIOR TO ANY DIGGING. ANY BROKEN SIGNAL WIRE CAN NOT BE SPLICED. A NEW RUN OF WIRE FROM THE POLE TO THE FURTHEST END MUST BE REPLACED.

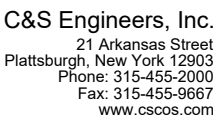
1. THE CONTRACTOR SHALL PROVIDE THE LOCAL POLICE THE NAME, ADDRESS, AND TELEPHONE NUMBER OF A PERSON OR PERSONS AUTHORIZED OUTSIDE THE NORMAL CONTRACT WORKING HOURS TO SECURE AND USE LABOR, MATERIALS, AND EQUIPMENT FOR EMERGENCY REPAIRS TO MAKE SAFE THE ENTIRE AREA OF THE CONTRACT. DUPLICATE COPIES OF SUCH NOTICES SHALL BE FILED WITH THE EIC, TRAFFIC SIGNAL MAINTENANCE, AND THE CITY OF PLATTSBURGH.

1. THE MANUFACTURER'S SUGGESTED CABLES (OR EQUIVALENTS) SHALL BE USED WITH AUDIBLE PEDESTRIAN SIGNAL (APS) UNITS. THE QUANTITY OF CABLE REQUIRED AT THIS LOCATION SHALL BE DETERMINED BY THE CONTRACTOR IN ACCORDANCE WITH THE APS MANUFACTURER'S INSTALLATION DETAILS AND PROCEDURES.
2. REFER TO THE MANUFACTURER'S INSTALLATION AND PROCEDURE MANUALS FOR DETAILS.
3. THE COST TO FURNISH AND INSTALL ALL WIRING BETWEEN THE AUDIBLE PEDESTRIAN SIGNAL (APS) UNITS FOR ITEM 680.81330010 AND THEIR RESPECTIVE CONTROL UNITS MOUNTED IN THE PED. HEADS SHALL BE INCLUDED UNDER PROVISIONS OF ITEM 680.81330010.

1. CONTRACTOR SHALL ORDER APS BUTTONS FROM MANUFACTURER WITH STREET NAME MESSAGES PRE-INSTALLED. CONTRACTOR SHALL PROVIDE COPIES OF THE ASSOCIATED ELECTRONIC WAVE FILES TO THE CITY OF PLATTSBURGH.
2. APS PUSH BUTTONS SHALL BE POLARA ENGINEERING BDL3 BULLDOG III SERIES VANDAL RESISTANT ADA PUSH BUTTON.

1. CITY OF PLATTSBURGH TO PROGRAM THE CONTROLLERS.

1. EXISTING PEDESTRIAN POLES, CONTROLLERS, CABINETS, PUSH BUTTONS, AND SIGN PANELS REMOVED BY CONTRACTOR SHALL BE RETAINED BY THE CITY, FOR PICKUP BY THE CITY OF PLATTSBURGH DPW.



**LOCAL PEDESTRIAN SAFETY  
ACTION PLAN**

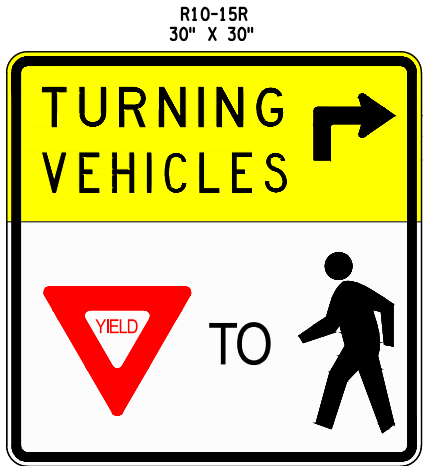
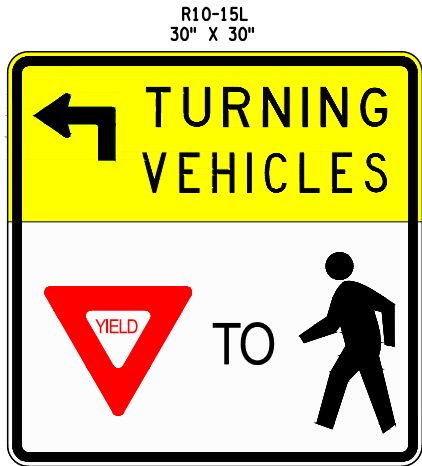
**CITY OF PLATTSBURGH  
CLINTON COUNTY, NEW YORK**

MARK	DATE	DESCRIPTION
REVISIONS		
PROJECT NO:	A54,001,001	
DATE:	JANUARY 2023	
DRAWN BY:	MNG	
DESIGNED BY:	KAN	
CHECKED BY:	TEH	
NO ALTERATION PERMITTED HEREON EXCEPT AS PROVIDED UNDER SECTION 7209 SUBDIVISION 2 OF THE NEW YORK EDUCATION LAW		

## TRAFFIC SIGNAL NOTES

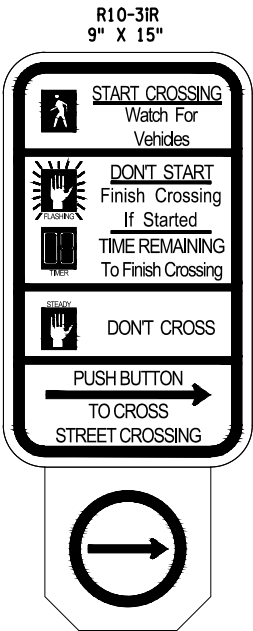
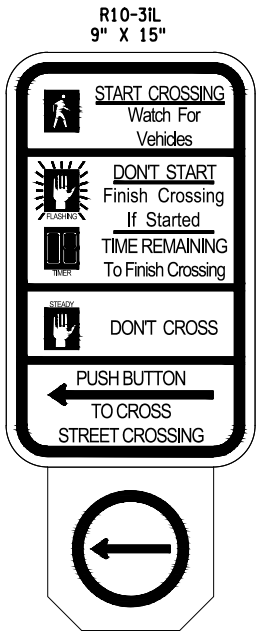
# TSN-1

Jan 11, 2023 - 10:49am  
F:\Project\A64 - City of Plattsburgh\A54001001 - Local PS&P Five Intersections\Design\CADD\Sheet Files\Re-Bid Jan 2023\70PS03\_1ten\_02.dwg



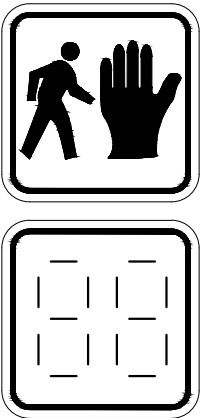
POLE, MAST ARM, OR SPAN WIRE MOUNTED YIELD SIGN

NOT TO SCALE



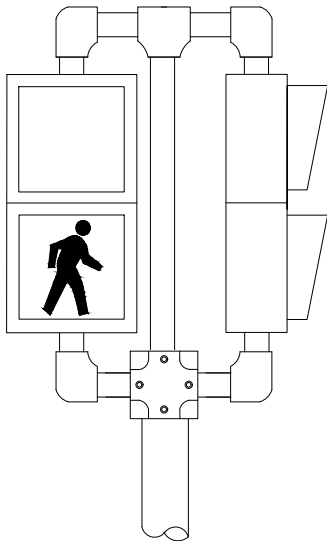
APS PUSH BUTTON AND SIGN

NOT TO SCALE



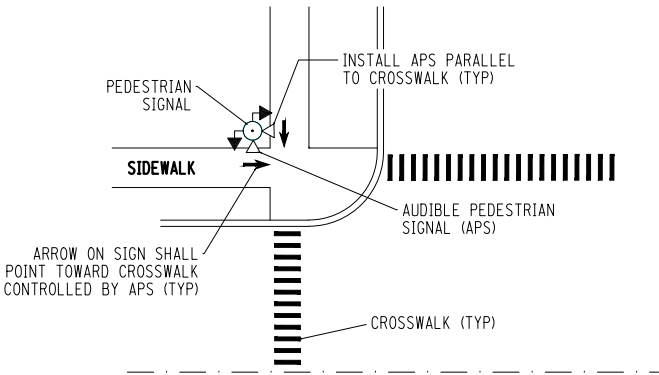
HAND/MAN MODULE AND COUNT-DOWN TIMER

NOT TO SCALE



PEDESTRIAN SIGNAL HEAD MOUNTING DETAIL

NOT TO SCALE



AUDIBLE PEDESTRIAN SIGNAL (APS)  
INSTALLATION SCHEMATIC

NOT TO SCALE

- NOTE:
1. POST TOP MOUNT PEDESTRIAN SIGNAL HEADS IN THIS CONTRACT (BI-DIRECTIONAL) SHALL BE INSTALLED WITH A REINFORCING PLATE AND TUBING AS SHOWN IN THE DETAIL.



C&S Engineers, Inc.  
21 Arkansas Street  
Plattsburgh, New York 12903  
Phone: 315-455-2000  
Fax: 315-455-9667  
www.cscos.com



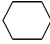
LOCAL PEDESTRIAN SAFETY  
ACTION PLAN  
CITY OF PLATTSBURGH  
CLINTON COUNTY, NEW YORK

MARK	DATE	DESCRIPTION
REVISIONS		
PROJECT NO: A54.001.001		
DATE: JANUARY 2023		
DRAWN BY: MNG		
DESIGNED BY: KAN		
CHECKED BY: TEH		
NO ALTERATION PERMITTED HEREON EXCEPT AS PROVIDED UNDER SECTION 7209 SUBDIVISION 2 OF THE NEW YORK EDUCATION LAW		

TRAFFIC SIGNAL  
DETAILS

TSN-2

Jan 11, 2023 - 10:49am  
F:\Project\A64 - City of Plattsburgh\A54001001 - Local PS&P Five Intersections\Design\CADD\Sheet Files\Re-Bid Jan 2023\70PS03\_tsn\_03.dwg

TABLE OF TRAFFIC SIGNAL QUANTITIES					
	ITEM NUMBER	DESCRIPTION	UNIT	CORNELIA ST AT BEEKMAN ST	CORNELIA ST AT N. CATHERINE ST
1	206.03	CONDUIT EXCAVATION AND BACKFILL INCLUDING SURFACE RESTORATION	LF	35	35
2	619.1613	MAINTAIN TRAFFIC SIGNAL EQUIPMENT (REQUIREMENT C)	INTM	1	1
3	635.0103	CLEANING AND PREPARATION OF PAVEMENT SURFACES - LINES	LF	2180	890
4	645.85	POLE MOUNTED SIGN SUPPORT SYSTEM (BAND MOUNTED)	EA	1	
5	647.31	RELOCATE SIGN PANEL, SIGN PANEL ASSEMBLY SIZE I (UNDER 30 SQUARE FEET)	EA		1
6	680.5001	POLE EXCAVATION AND CONCRETE FOUNDATION	CY	1.6	1.6
7	680.510501	PULLBOX - RECTANGULAR, 26" X 18", REINFORCED CONCRETE	EA		5
8	680.520106	CONDUIT, METAL STEEL, ZINC COATED, 2 NPS	LF	35	35
9	680.520108	CONDUIT, METAL STEEL, ZINC COATED, 3 NPS	LF	120	320
10	680.53	CONDUIT JACKING OR BORING	LF	120	320
11	680.6708	TRAFFIC SIGNAL POLE POST TOP MOUNT, 8 FEET MOUNTING HEIGHT	EA	4	4
12	680.730714	SIGNAL CABLE 7 CONDUCTORS, 14 AWG	LF	900	880
13	680.78010005	ALTER PULLBOX FOR CONDUITS	EA	4	
14	680.813103	PEDESTRIAN SIGNAL SECTION - TYPE 1, 12 INCH	EA	16	16
15	680.813105	PEDESTRIAN SIGNAL MODULE - 12 INCH, BI-MODAL HAND/MAN SYMBOLS, LED	EA	8	8
16	680.81330010	AUDIBLE PEDESTRIAN SIGNAL	EA	8	8
17	680.8142	PEDESTRIAN SIGNAL POST TOP MOUNT ASSEMBLY	EA	4	4
18	680.81500010	PEDESTRIAN COUNTDOWN TIMER MODULE	EA	8	8
19	680.8204	OVERHEAD SIGN ASSEMBLY, TYPE D	EA	1	1
20	685.11120009	EPOXY REFLECTORIZED PAVEMENT STRIPES 20 MILS - HAND WORK	LF	1220	1160



C&S Engineers, Inc.  
21 Arkansas Street  
Plattsburgh, New York 12903  
Phone: 315-455-2000  
Fax: 315-455-9667  
www.cscos.com



LOCAL PEDESTRIAN SAFETY  
ACTION PLAN  
CITY OF PLATTSBURGH  
CLINTON COUNTY, NEW YORK

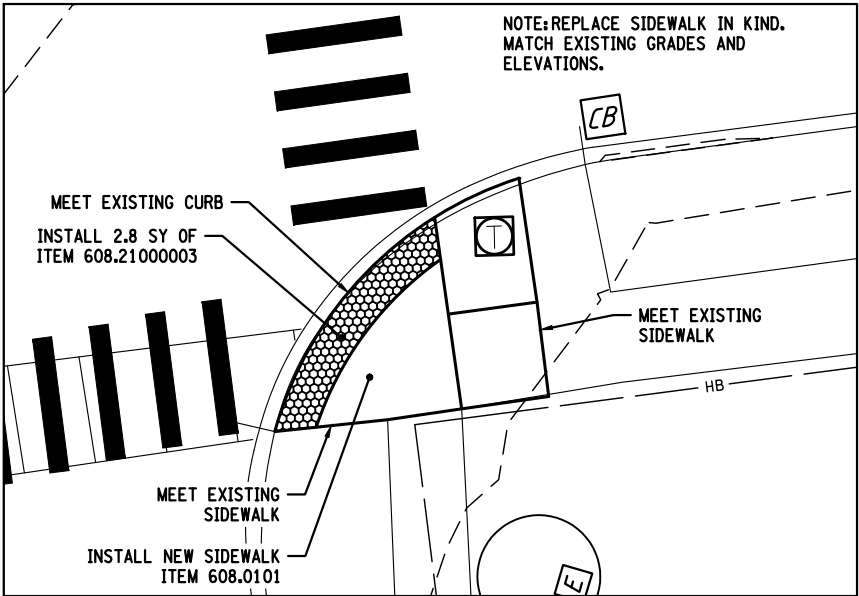
MARK	DATE	DESCRIPTION
REVISIONS		
PROJECT NO: A54.001.001		
DATE: JANUARY 2023		
DRAWN BY: MNG		
DESIGNED BY: KAN		
CHECKED BY: TEH		
NO ALTERATION PERMITTED HEREON EXCEPT AS PROVIDED UNDER SECTION 7209 SUBDIVISION 2 OF THE NEW YORK EDUCATION LAW		

TRAFFIC SIGNAL  
QUANTITIES

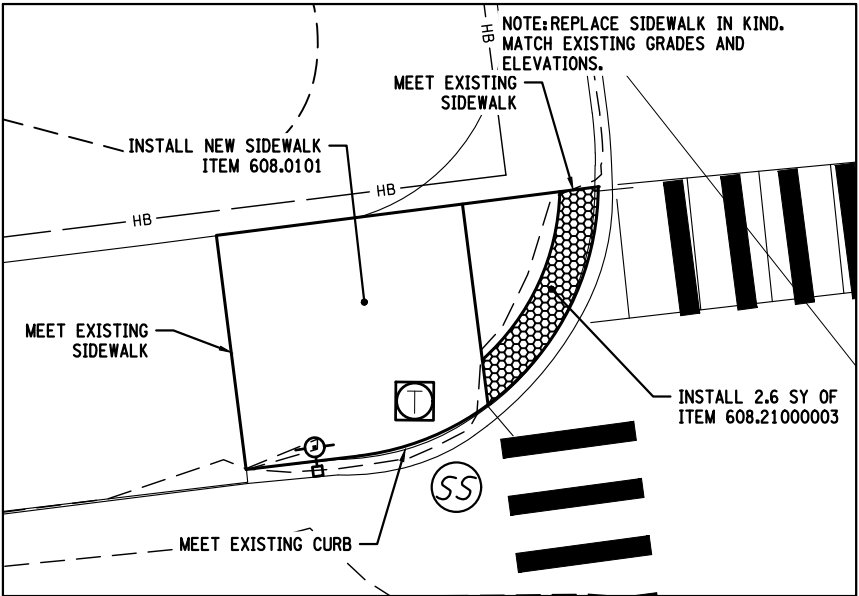
TSN-3



Jan 11, 2023 - 10:49am  
F:\Project\A4 - City of Plattsburgh\A4401001 - Local PS&P Five Intersections\Design\A4401001\Sheet Files\Re-Bid Jan 2023\70PS03\_ord\_01.dwg



CORNELIA STREET AND NORTH CATHERINE STREET  
SOUTHEAST QUADRANT



CORNELIA STREET AND NORTH CATHERINE STREET  
NORTHWEST QUADRANT

NOTES:

1. THE DETAILS AND DIMENSIONS PROVIDED ARE APPROXIMATE TO ACHIEVE ADA COMPLIANT RAMPS. THE CONTRACTOR SHALL FIELD VERIFY ALL DIMENSIONS AND GRADES TO ENSURE COMPLIANCE WITH ADA REQUIREMENTS AND NYSDOT STANDARD SHEET 608-01 (SHEETS 1-12)
2. IF LAYOUTS REQUIRE ADJUSTMENT DUE TO FIELD CONDITIONS, NOTIFY ENGINEER IMMEDIATELY.
3. SIDEWALK REMOVALS SHALL END AT AN EXISTING JOINT.
4. REFER TO NYSDOT STANDARD SHEET 608-01 (SHEETS 1-12) FOR ADDITIONAL CURB RAMP NOTES AND DETAILS.
5. ARROWS ON RAMPS REPRESENT DOWN GRADE DIRECTION. THE RUNNING SLOPE OF A CURB RAMP SHALL BE 7.5% MAXIMUM. SEE NOTES ON STANDARD SHEET 608-01 (SHEET 1 OF 12).
6. REFER TO DWG NO. MSD-01 FOR SIDEWALK INSTALLATION SECTION.
7. SYMBOLS (SIGNAL POLES, PULLBOXES, MANHOLES, VALVES, MONUMENTS, DRAINAGE STRUCTURES, ETC.) MAY BE EXAGGERATED FOR CLARITY.

LEGEND:

- DETECTABLE WARNING UNIT (ITEM 608.21000003)
- CONCRETE SIDEWALK AREA (ITEM 608.0101)
- REMOVE EXISTING SIDEWALK
- TURNING SPACE. SLOPE NOT TO EXCEED 1.5% IN ANY DIRECTION.
- PROPOSED ELEVATION
- EXISTING ELEVATION
- RAMP GRADE



LOCAL PEDESTRIAN SAFETY  
ACTION PLAN  
CITY OF PLATTSBURGH  
CLINTON COUNTY, NEW YORK

MARK	DATE	DESCRIPTION
REVISIONS		
PROJECT NO: A54.001.001		
DATE: JANUARY 2023		
DRAWN BY: MNG		
DESIGNED BY: KAN		
CHECKED BY: TEH		
NO ALTERATION PERMITTED HEREON EXCEPT AS PROVIDED UNDER SECTION 7209 SUBDIVISION 2 OF THE NEW YORK EDUCATION LAW		

CURB RAMP  
DETAILS

CRD-1

SHEET 15 OF 16

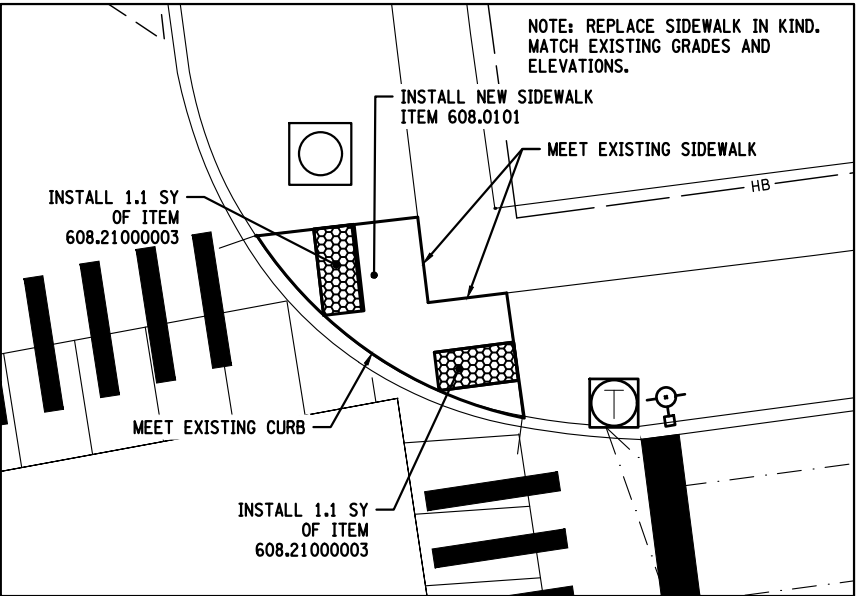
Copyright ©



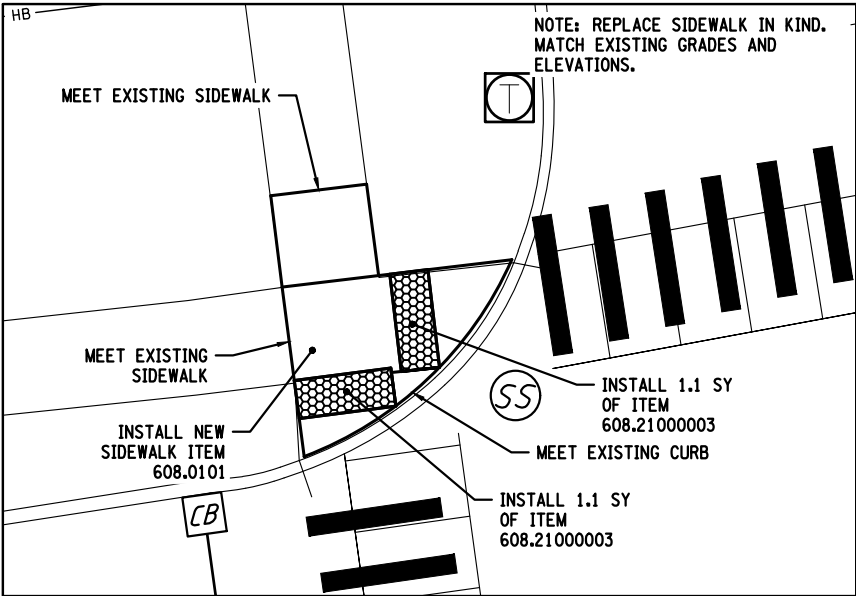
C&S Engineers, Inc.  
21 Arkansas Street  
Plattsburgh, New York 12903  
Phone: 315-455-2000  
Fax: 315-455-9667  
www.cscos.com



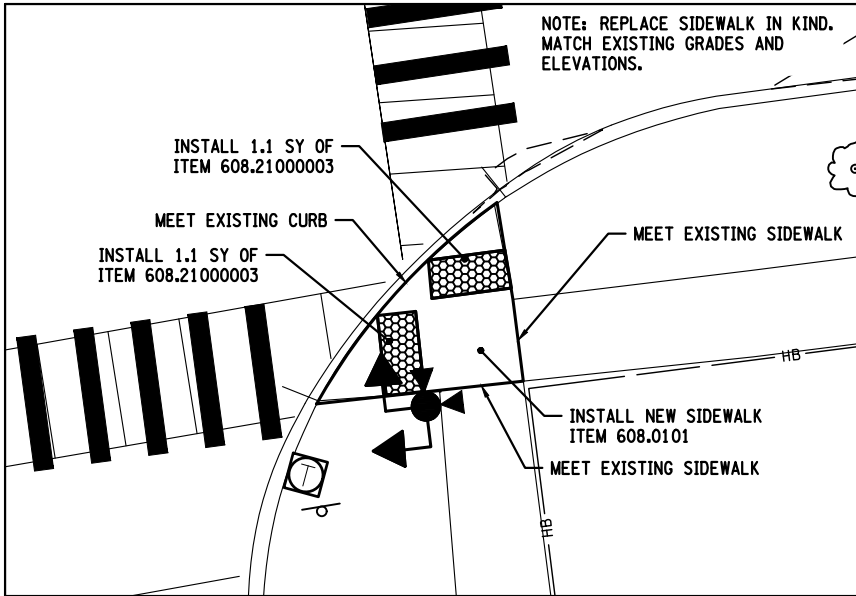
Jan 11, 2023 - 10:50am  
F:\Project\A64 - City of Plattsburgh\A6401001 - Local PS&P Five Intersections\Design\CADD\Sheet Files\Re-Bid Jan 2023\70PS03\_ord\_02.dwg



CORNELIA STREET AND BEEKMAN STREET  
NORTHEAST QUADRANT



CORNELIA STREET AND BEEKMAN STREET  
NORTHWEST QUADRANT



CORNELIA STREET AND BEEKMAN STREET  
SOUTHEAST QUADRANT

NOTES:

1. THE DETAILS AND DIMENSIONS PROVIDED ARE APPROXIMATE TO ACHIEVE ADA COMPLIANT RAMPS. THE CONTRACTOR SHALL FIELD VERIFY ALL DIMENSIONS AND GRADES TO ENSURE COMPLIANCE WITH ADA REQUIREMENTS AND NYSDOT STANDARD SHEET 608-01 (SHEETS 1-12)
2. IF LAYOUTS REQUIRE ADJUSTMENT DUE TO FIELD CONDITIONS, NOTIFY ENGINEER IMMEDIATELY.
3. SIDEWALK REMOVALS SHALL END AT AN EXISTING JOINT.
4. REFER TO NYSDOT STANDARD SHEET 608-01 (SHEETS 1-12) FOR ADDITIONAL CURB RAMP NOTES AND DETAILS.
5. ARROWS ON RAMPS REPRESENT DOWN GRADE DIRECTION. THE RUNNING SLOPE OF A CURB RAMP SHALL BE 7.5% MAXIMUM. SEE NOTES ON STANDARD SHEET 608-01 (SHEET 1 OF 12).
6. REFER TO DWG NO. MSD-01 FOR SIDEWALK INSTALLATION SECTION.
7. SYMBOLS (SIGNAL POLES, PULLBOXES, MANHOLES, VALVES, MONUMENTS, DRAINAGE STRUCTURES, ETC.) MAY BE EXAGGERATED FOR CLARITY.

LEGEND:

- |  |  |
|--|--|
|  | DETECTABLE WARNING UNIT<br>(ITEM 608.21000003)               |
|  | CONCRETE SIDEWALK AREA<br>(ITEM 608.0101)                    |
|  | REMOVE EXISTING SIDEWALK                                     |
|  | TURNING SPACE. SLOPE NOT TO<br>EXCEED 1.5% IN ANY DIRECTION. |
|  | PROPOSED ELEVATION   |
|  | EXISTING ELEVATION   |
|  | RAMP GRADE   |



C&S Engineers, Inc.  
21 Arkansas Street  
Plattsburgh, New York 12903  
Phone: 315-455-2000  
Fax: 315-455-9667  
www.cscos.com



LOCAL PEDESTRIAN SAFETY  
ACTION PLAN  
CITY OF PLATTSBURGH  
CLINTON COUNTY, NEW YORK

MARK	DATE	DESCRIPTION
REVISIONS		
PROJECT NO: A54.001.001		
DATE: JANUARY 2023		
DRAWN BY: MNG		
DESIGNED BY: KAN		
CHECKED BY: TEH		
NO ALTERATION PERMITTED HEREON EXCEPT AS PROVIDED UNDER SECTION 7209 SUBDIVISION 2 OF THE NEW YORK EDUCATION LAW		

CURB RAMP  
DETAILS

CRD-2

SHEET 16 OF 16